

FINE ART & ANTIQUES

Saturday 12th December at 10am

On View

Thursday 10th December 10am-7pm

Friday 11th December 9am - 7pm

and from 9am on the morning of the sale



Catalogue web site: WWW.LSK.CO.UK

Results available online approximately
one hour following the sale

Buyer's Premium charged on all lots at 20% plus VAT

Live bidding available through our website
(3% plus VAT surcharge applies)

Image this page: Lot 2523

Please note that this catalogue is published in anticipation of lockdown ending on 2nd December as promised, and we hope to be able to welcome you back into the Auction Centre for viewing and auctions. However if government restrictions continue beyond that date, then the auctions will become remote bidding only as with our November sales, and we will be more than happy to provide extra images and condition reports upon request.

**LACY SCOTT
& KNIGHT**

150 YEARS est. 1869

Chartered Surveyors
Land & Estate Agents
Auctioneers & Valuers

Ed Crichton ASFAV – Partner
Tel: **01284 748 622**
Email: ecrichton@lsk.co.uk
www.lsk.co.uk

BOOKS

Please note that Books are sold subject to no return.

2001

BLADEN, Col. Martin. (transl.) Julius Caesar's Commentaries of His Wars in Gaul..... Knappton & Midwinter, London. 1726. 4th edition. 3 folding maps, 9 folding engravings and full page engraving. Presented in full leather binding. Blind tooled panelling to both boards, raised bands, gilt titles and date to spine. [1] **£80-100**

2002

BLANCHARD, E.L. (ed), Dugdale's England and Wales Delineated. L.Tallis, London, nd [c.1860]. Thick 8vo. Presented in two matching half leather bindings, boards dressed in marbled paper. Raised bands to spine and gilt labels. Marbled endpapers. 58 maps and 118 engravings. [2] **£50-80**

2003

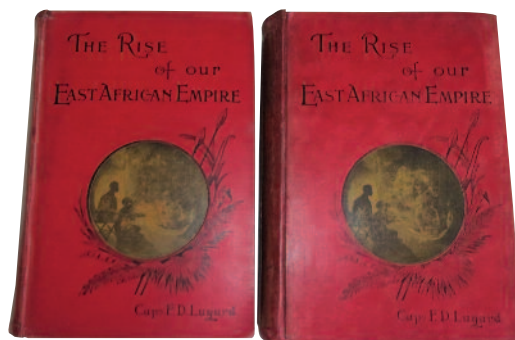
CHAUCER, G. The Canterbury Tales. James Nichol, Edinburgh, 1860. 3 vols. Includes essays, Memoir and life as well as the tales. Presented in full leather bindings. Gilt lining to boards. Raised bands to spines, Marbled edges, Marbled end papers. [3] **£80-100**

2004

WRIGHT, Andrew, Court Hand Restored, or The Student's Assistant in Reading Old Deeds....., Benjamin White, London 1776 1st edition, 8vo. Presented in modern quarter calf binding, boards dressed in brown buckram. Raised bands to spine with gilt label. Hand made paper endpapers [1] **£70-90**

2005

LUGARD, Capt. F.D. The Rise of Our East African Empire. William Blackwood & Sons, London, [1893] 1st ed. 8vo. Presented in 2 vols in original red publisher's cloth. Vol 1: 29 full page plates and 3 coloured maps, of which one is in the front pocket. Vol 2: 25 full page plates and 5 coloured maps. [2] **£60-100**



Lot 2005

2006

Scientific Results of the Oxford University Expedition to Sarawak (BORNEO) in 1932. OUP, London, 1952, 1st edition. 8vo. In original publisher's cloth. A collection of 48 original offprints on the Sarawak Expedition of 1932 bound by the Oxford Press. [1] **£50-80**

2007

Murphy, A. (transl) The Works of Cornelius Tacitus. John Stockdale et al. London 1811. 8 vols. Presented in full leather bindings. Raised bands to spines with gilt decoration and titling. Blind stamped borders to boards. [8] **£80-100**

2008

COBBOLD, Richard. Zenon, The Martyr. Henry Colburn, London. 1847 1st edition. 3 vols. [3] **£70-90**

2009

COBBOLD, Richard. Mary Anne Wellington. Henry Colburn, London. 1846 1st edition. 3 vols. [3] **£70-90**

2010

NALSON, John. An Impartial Collection of the Great Affairs of State From the Beginning of the Scotch Rebellion..... Meame, Dring et al. London 1682. 2 Vols Small Folio. Presented in matching full leather bindings. Raised bands and gilt labels to spines. [2] **£150-200**

2011

DOWNNAME, J. Annotations Upon All Books of the Old and New Testaments. John Legatt, London 1651 2nd edition. Vol 2 only. Folio. Presented in full contemporary leather. Raised bands to spine and more recent paper label. [1] **£80-100**



Lot 2012

2012

TOLKIEN, J.R.R. The Hobbit. George Allen & Unwin, London. 1954 6th impression (second printing of the second edition). In original publisher's cloth with map endpapers. With original dustwrapper. Together with **The Fellowship of the Ring.** George Allen & Unwin, London. 1959, 8th impression. In original publisher's cloth, folding map and in original dustwrapper: **£200-250**

2013

YORKE, James. The Union of Honour containing the Armes, Matches and Issues of the Kings..... Edward Griffin, London 1640 1st edition. Presented in full leather. Blind stamped lines to boards, raised bands to spine. Woodcut illustrations of coats of arms throughout. 331pp plus 76pps of 'Battels' and 52pps of Viscounts and Barons. **£250-300**

2014

TYMMS, W.R & WYATT, M.D. The Art of Illuminating as Practised in Europe from the Earliest Times. Dan and Son, London, Lithographers to The Queen, April 2nd 1860 1st ed. In quarter leather binding. Aeg. 100 high quality, tissue guarded chromolith plates by Tymms. [1] **£70-90**

2015

FITZGERALD, Edward, Rubaiyat of Omar Khayyam. Siegle, Hill & Co, London, c1910. Reproduced from a manuscript written and illustrated by Sangorski & Sutcliffe. Rebacked in quarter vellum. [1] **£75-100**

All lots plus buyers premium of 24% including VAT

2016

NIGHTINGALE, Florence. *Notes on Nursing for the Labouring Classes.* Harrison, London, 1881, 16th thousand. Presented in modern maroon full leather binding, with gilt leather title patch to front board. [1]
£50-70

2017

ANON. *The Nurse.* Houlston & Sons, London, 1864. Original publisher's cloth. Volume 26 from the Industrial Library. [1]
£50-70

2018

ALEXANDRA (Princess Arthur of Connaught, Duchess of Fife). *A Nurse's Story.* Privately printed 1955. Author signed to half title. Als sellotaped to front pastedown. Together with: *Death of Edith Cavell, 1915*, Stutter's Casebook, 2005, *Notes on Nursing*, facsimile copy and two others. [6]
£40-60

2019

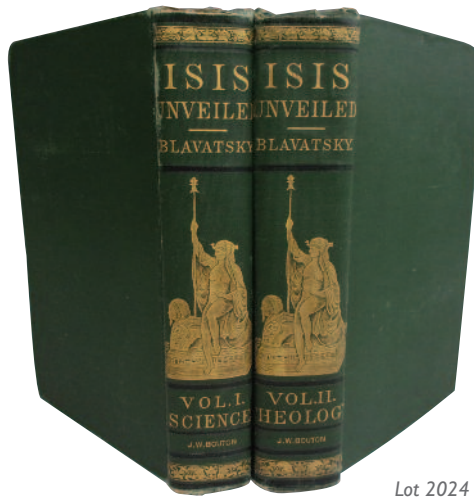
HOME, Henry (Lord Kames). *The Gentleman Farmer.* Edinburgh, 1788, 3rd ed. Presented in full leather: 3 engraved plates. [1]
£60-80

2020

PALMER CLARKE, J. (Photographer). *Moreton Hall, Bury St. Edmunds.* Nd, early 20th cent. A bound collection of 21 high quality b/w photographs of Moreton Hall. Presented in full leather with gilt titling to front board. Aeg. Together with: **COOKE, G.A.** *A Topographical and Statistical Description of the County of Suffolk.* Sherwood, Jones & Co, London. C. 1805. 4 engraved plts and folding col. county map. Presented in cloth binding. And 1 other: [3]
£50-70

2021

DAVY, Henry. *A Series of Etchings Illustrative of the Architectural Antiquities of Suffolk.* Published by the author, Southwold, 1827. Folio. Presented in half leather. With list of subscribers and all 71 full page plates by Davy. Aeg. Bookplate of Lord Fairhaven to front pastedown. [1]
£300-500



Lot 2024

NOTE: Lots 2022 – 2030 are from a large single owner collection of works on Esoteric, Occult and Theosophical matters.

2022

ABBOTT, Edwin, A. *Flatland, A Romance of Many Dimensions.* Basil Blackwell, Oxford, 1932 4th ed, revised. In original paper wraps. [1]
£30-40

2023

MAIRET, Philippe. *Aristocracy and the Meaning of Class Rule.* C.W. Daniel, London, 1951 1st ed. In original publisher's cloth. A very scarce item in the very rarely seen original dustwrapper.
£150-200

2024

BLAVATSKY, H.P. *Isis Unveiled.* J.W. Bouton, New York, 1901 6th ed. 2 vols presented in original publisher's cloth. [2]
£100-150

2025

AVALON, Arthur. *The Serpent Power.* Ganesh & Co, Madras, 1931 3rd ed, revised. In original publisher's cloth. 17 plates. [1]
£50-70

2026

EVANS-WENTZ, W.Y. *The Tibetan Book of the Dead,* OUP, Oxford, 1936 2nd imp. Together with: *The Tibetan Book of the Great Liberation.* OUP, Oxford, 1954 1st ed. Both in original publisher's cloth with dustwrappers. [2]
£60-80

2027

LEVI, Eliphas. *Transcendental Magic.* William Rider, London, 1923. New Edition. In original publisher's cloth. Illus. Teg. Other edges deckled. [1]
£60-80

2028

EVANS-WENTZ, W.Y. *Tibetan Yoga and Secret Doctrines.* O.U.P. Oxford, 1935 1st ed. Together with: *Tibet's Great Yogi Milarepa.* O.U.P. Oxford, 1928 1st ed. Both in original publisher's cloth, Teg, other edges deckled. Illus. [2]
£100-120

2029

YEATS, William Butler. *A Vision, An Explanation of Life Founded upon the Writings of Giralduis.....* Privately Printed for Subscribers only. T. Werner Laurie, 1925. **AUTHOR SIGNED LIMITED EDITION COPY NUMBER 215/600.** Presented in original quarter vellum with paper spine label. Deckled edges. Illus. [1]
£300-500

2030

BAILEY, Alice A. A collection of various works by Alice Bailey in two boxes. To include **A Treatise on White Magic, A Treatise on the Seven Rays, Esoteric Healing etc etc.** Various editions, several 1sts, mainly published by Lucius Press, New York and John Watkins, London. Some duplicate titles. Mainly 1930's printings, a few in dustwrappers. [29]
Alice Bailey was a British writer on Theosophical and Occult matters. One of the first to coin the phrase 'New Age'. She claimed much of her writing had been telepathically dictated by a Master of Wisdom, known initially as 'The Tibetan'. Her work is often compared with that of Madame Blavatsky.
£150-250

2031

CRISP (Frederick A), *Catalogue of Lowestoft China,* 1907, privately printed, 4to, No.45/150 copies, untrimmed, half vellum
£60-80



Lots 2035, 2036

CERAMICS & GLASS

2035

A Royal Worcester bluishware pot pourri vase and cover, decorated with thistles and white flowers on a shaded blush ground, shape No.1995, circa 1898, h.19cm
£80-120

2036

A Royal Worcester bluishware pot pourri vase and cover, decorated with wildflowers and insects in a landscape to a shaded blush ground, shape No.1515, circa 1897, h.16.5cm
£80-120

2037

A Royal Worcester pedestal sweetmeat dish, decorated with fruit on a mossy bank by William Bee, printed blue mark, circa 1944-55, h.8cm
£80-120

2038

A matched pair of Royal Worcester and Hadley's Worcester twin handled slender neck vases, one with cover, each decorated with flowers on a shaded ground, heightened in gilt, shape No.229, one with Royal Worcester and Hadley's backstamp, the other with Hadley's Worcester backstamp, h.31cm
£150-200

2039

A Royal Worcester porcelain twin handled globular vase, decorated with flowers and foliage in the imari palette on a yellow ground within a green border; all heightened in gilt, shape No.871, green mark and date code for 1884, further marked Patent Metallic, h.27cm
£100-150



Lot 2037

2040

A Royal Worcester porcelain Sabrina ware vase, decorated with pink flamingos wading in a rock-pool by C Johnson, shape No.2195, puce mark, circa 1910, h.20cm
£200-300

2041

A pair of Royal Worcester figural comports by James Hadley, modelled as a boy and girl seated upon a treestump with an oval bowl by their feet, shape No.1152, puce backstamp, circa 1887, h.22cm; together with a Royal Worcester figure of a male Cairo water-carrier modelled by James Hadley, shape No.1250, decorated in shot enamels, h.22cm (3)
£100-150



Lot 2038



Lots 2039, 2040



Lot 2041

All lots plus buyers premium of 24% including VAT



Lot 2042

2042

A Royal Worcester Nautilus shell, heightened in gilt on a shaded blush ground, shape No.94, circa 1910, h.20cm; together with a Royal Worcester gilded porcelain lily-flower candle holder, puce mark, shape No.1088, h.11.5cm; and a pair of Victorian Worcester table salts, each modelled as a dolphin supporting a clam shell, circa 1866, h.8.5cm (4)
£100-150

2043

A Royal Worcester blushware pedestal vase, decorated with flowers and insects, heightened in gilt, shape No.1482, circa 1892, h.31.5cm; together with a Royal Worcester blushware jug, shape No.1047, h.25cm; a pedestal ewer, shape No.1944, h.24cm; and a flatback jug, shape No.1094, h.13.5cm, all with puce marks and circa 1900 (4)
£150-200

2044

A Royal Worcester blushware pot pourri vase and cover, with inner cover; decorated with wildflowers on a blush ground and heightened in gilt, shape No.1314, circa 1904, h.14cm; together with a blushware footed bowl, shape No.1735, h.10cm; and one other blushware pot pourri vase and cover; shape No.291 (3)
£80-120



Lot 2045



Lot 2043

2045

A Grainger & Co Royal Chinaworks Worcester porcelain pedestal vase, decorated with a bird amidst thistle branches on a blush ground, shape No.788, h.23cm; together with a Grainger & Co squat vase, shape No.545; and a Grainger & Co conical hat, shape No.178 (3)
£70-100

2046

A Royal Worcester porcelain bottle vase and cover, having a fluted slender neck, decorated with pink and red roses by W H Austin, shape No.103, puce backstamp, circa 1915, h.24.5cm; together with a Royal Worcester ivoryware tusk jug, decorated with thistles and heightened in gilt, shape No.1116, puce backstamp, circa 1889, h.22.5cm (2)
£80-120

2047

A Royal Worcester globular vase, on three gilded ball feet, decorated by James Stinton with a pheasant in a landscape on a shaded blush ground, shape No.415, circa 1913, h.8.5cm; together with a conical vase decorated with pheasant and grouse in a landscape on a blush ground by James Stinton, shape No. G957, circa 1913, h.8cm; a matching conical example on a white ground; and one other globular vase, decorated with a robin upon a branch on a shaded blush ground, shape No. G1042, circa 1913, h.7cm (4)
£250-400



Lot 2046



Lot 2044



Lot 2047

All lots plus buyers premium of 24% including VAT



Lot 2048



Lot 2049



Lot 2050



Lot 2051



Lot 2052

2048

A Worcester porcelain hand-held vase, of conical form, the vase decorated with wildflowers, the hand with a jeweled bracelet, impressed circle and crown mark, h.15.5cm; together with a Worcester porcelain fern leaf jug, 10.5cm; and a pierced leaf vase, shape No.412, h.10.5cm (3)

£80-100

2049

A Royal Worcester porcelain cabinet cup and saucer, decorated by Rushton with an Italianate river landscape on a white ground, gilt borders, puce mark, circa 1912; one other decorated with a view of Stratford on a bluish ground, puce mark, circa 1904; and two others, both decorated with floral sprays and heightened in gilt, each circa 1900 (4)

£120-180

2050

A Worcester porcelain trio, Flight period, comprising coffee cup, tea bowl, and saucer, each fluted with cobalt blue bands, decorated with floral sprigs in gilt, with blue painted flight mark and crescent verso, circa 1783-88; together with two 19th century English porcelain teacups and three saucers, decorated in the Chinoiserie palette, crown marks verso (8)

£50-80

2051

A pair of Royal Worcester porcelain Nautilus shell vases, each on bronzed and gilded moulded bases, impressed and printed green mark and date code for 1884, h.20.5cm

£100-150

2052

A Worcester porcelain sparrowbeak cream jug, blue and white printed with flowers and insects, with open crescent C mark verso, circa 1755-90 (hairline to base of handle); together with a Worcester porcelain slop bowl, underglaze blue painted with a pagoda landscape, with open crescent mark verso (chip to inside of rim), dia.12cm (2)

£100-150

2053

A Lowestoft porcelain chestnut basket and cover on stand, circa 1775-1885, underglaze blue decorated in the Pinecone pattern, each piece with leaf and flower encrusted decoration, stand w.29.5cm (stand with restoration)

£2,000-3,000



Lot 2053

All lots plus buyers premium of 24% including VAT



Lots 2054, 2055



Lots 2056, 2057, 2058



Lot 2060

2054
A Lowestoft porcelain chestnut basket, circa 1785, lattice-worked and blue and white printed in the Pinecone pattern (both handles restored), w.21cm
£250-400

2055
A Lowestoft porcelain chestnut basket, circa 1785, lattice worked and blue and white printed in the Pinecone pattern (repairs to rim), w.24.5cm
£250-400

2056
A Lowestoft porcelain footed slop bowl, circa 1780, polychrome decorated in the Famille Rose palette in the Blackbird pattern, dia.15.5cm
£150-200

2057
A Lowestoft porcelain teapot and cover, circa 1775-80, polychrome decorated in the Famille Rose palette with floral sprays by the 'Tulip-painter', h.17cm
£250-350

2058
A Lowestoft porcelain tea bowl, decorated in the Tobacco leaf pattern and the Imari palette, dia.7.5cm
£80-120

2059
A Hispana Moresque lustre ware charger, Spain, 16/17th century, decorated with flowers and foliage (with major damage and fully restored), dia.40cm
£300-400

2060
A Wrotham style brown and yellow slipware tyg, the frieze bearing motto 'THIS CUP I MADE FOR ANN DRAPER, YOU AND SO NO MORE, IW 1707', h.17cm
£100-150



Lot 2059

All lots plus buyers premium of 24% including VAT



Lots 2061, 2062



Lot 2063



Lots 2066, 2067



Lot 2064

2061

A 19th century Staffordshire loving cup, transfer printed and painted with Masonic verse 'Everyone helped his neighbour is said to his Brother to be of good cheer' and 'The real cabinet of justice and equity', h.27cm (af) £120-180

2062

A 19th century Staffordshire loving cup, transfer printed and painted with Masonic verse 'Everyone helped his neighbour is said to his Brother to be of good cheer' and 'The real cabinet of justice and equity', h.21cm (af) £80-120

2063

A French faience model of a recumbent pug dog upon a cushion, having all-over sponged decoration (some losses to extremities), w.42cm £250-400

2064

A 19th century Wemyss ware bowl, polychrome decorated with cabbage-roses, signed verso Wemyss T Goode & Co London, dia.28cm £60-80



Lot 2065

2065

Two 18th century Leeds creamware Dutch decorated Orangeist portrait plates, (one badly damaged and in five pieces), the larger dia 20cm; together with one similar small dish, dia.12cm (chip to rim); and an 18th century creamware and polychrome decorated tankard (with hairlines) (4) £60-90

2066

A late 19th century Meissen porcelain teapot and cover, of bullet shape, underglaze blue decorated in the Onion pattern, with underglaze blue crossed sword mark verso, h.12cm £40-60

2067

A late 19th century Vienna porcelain cabinet plate, the central ground decorated with a Bacchanalian scene, within a finely worked gilt enamel border; with underglaze blue beehive mark verso, dia.24.5cm £120-180

All lots plus buyers premium of 24% including VAT

SILVER & PLATED WARES

2071

A late Victorian silver vesta, of plain undecorated hinged rectangular form, with domed cover and suspension loop, maker George Unite, Birmingham 1879; together with another late Victorian silver vesta, of hinged rectangular form, having wrythen type swirling decoration, with suspension loop, maker John Milward Banks, Chester 1899 (2)
£40-60



Lot 2071



Lot 2072



Lot 2075



Lot 2073



Lot 2076



Lot 2074

2072

A late Victorian silver vesta of heart shape, having raised red enameled heart shaped decoration and striker to one side, maker William Hornby, London 1898
£50-80

2073

A George V silver vesta, of hinged rectangular form, having vacant circular cartouche, maker A & J Zimmerman, Birmingham 1920; together with an Edwardian silver vesta, of hinged rectangular form surmounted by a fox mask, maker A & J Zimmerman, Birmingham 1903 (2)
£40-60

2074

A late Victorian silver vesta, of hinged rectangular form, having raised floral and C-scroll decoration with raised beneath, maker Henry Matthews, Birmingham 1899; together with another late Victorian silver vesta, of hinged rectangular form with vacant circular cartouche and striker below, maker William Neale, Chester 1896 (2)
£50-80

2075

An Edwardian silver vesta, of hinged circular form, surmounted by a dog with striker below, maker Edwin William Barling, London 1906; together with a late Victorian silver vesta, of plain hinged rectangular form, with engraved monogram, maker Wright & Davies, London 1899 (2)
£50-80

2076

An Edwardian silver vesta to commemorate the coronation of King Edward VII, of hinged rectangular form, relief decorated with a head and shoulders portrait of King Edward VII, maker JH Wilcox, Birmingham 1901
£40-60

2077

A late Victorian silver vesta, of hinged rectangular form, the cover inset with a compass dial, maker Sampson Mordan & Co, London 1899
£40-60



Lot 2077

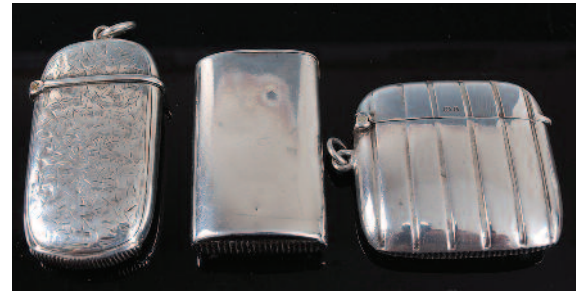
All lots plus buyers premium of 24% including VAT



Lot 2078



Lot 2079



Lot 2080



Lot 2081



Lot 2082



Lot 2083

2078

An Edwardian silver vesta, of hinged rectangular form, relief decorated with bust of a West Highland Terrier; maker John Rose, Birmingham 1907; **£30-50**

2079

A late 19th century French silver vesta, of hinged rectangular form, relief decorated with a crown above a hound, with further yellow metal raised devices similar to that of the Duchy of Brittany; maker Prudent Quitte, Paris circa 1882 **£40-60**

2080

A late Victorian silver vesta, of rounded rectangular form, having all-over foliate engraved decoration and vacant cartouche; maker George Unite, Birmingham 1886; together with a late Victorian silver vesta, of plain undecorated round rectangular form; maker George Unite, Birmingham 1882; and an Edwardian silver vesta, of flattened rectangular form, having line engraved decoration; maker A & J Zimmerman, Birmingham 1910 (3) **£50-80**

2081

A George V silver vesta, of hinged rectangular form, having all-over foliate engraved decoration and shield shaped cartouche initialled HB; maker Joseph Gloster Ltd, Birmingham 1916; together with a late Victorian silver vesta, of rounded rectangular form, having foliate engraved decoration and vacant cartouche; maker Robert Pringle, Chester 1897 (2) **£40-50**

2082

A late Victorian silver vesta, of rounded rectangular form, having all-over clover leaf engraved decoration with vacant cartouche; maker Joseph Gloster; Birmingham 1899; together with an Edwardian silver vesta, of hinged square form, having line engraved decoration and circular initialled cartouche, with gilt-washed interior; maker Elkington & Co, Birmingham 1910 (2) **£40-60**

2083

A late Victorian silver vesta, of hinged rectangular form, having all-over foliate engraved decoration, initialled shield shaped cartouche and gilt-washed interior; maker Henry Pope, Birmingham 1899; together with a large Edwardian silver vesta, of hinged rectangular form, having all-over foliate engraved decoration and vacant shaped cartouche; maker Smith & Bartlam, Birmingham 1906 (2) **£50-70**

2084

A late Victorian silver vesta, of hinged rectangular form, relief decorated with flowers and C-scrolls, with vacant cartouche; maker Thomas Hayes, Birmingham 1882; together with a George V silver vesta, of hinged rectangular form, having floral engraved decoration with vacant shield shaped cartouche; maker Duncan & Scobbie, Birmingham 1912 (2) **£40-60**



Lot 2084

All lots plus buyers premium of 24% including VAT



Lot 2085



Lot 2086



Lot 2090



Lot 2087

2085

A George V silver vesta, of canted rectangular form, having line engraved decoration, maker Deakin & Francis, Birmingham 1912; together with a late Victorian silver vesta, of plain undecorated hinged rectangular form, maker Cohen & Charles, Chester 1896 (2)
£40-60



Lot 2092



Lot 2088

2086

An Edwardian silver vesta, of plain undecorated rounded rectangular form, having central monogram, maker Stokes & Ireland Ltd (William Henry Stokes & Arthur George Ireland), Chester 1907; together with another Edwardian silver vesta, of hinged rectangular form, having relief floral decoration and vacant shield shaped cartouche, maker George Knight, Birmingham 1907 (2)
£40-60

2090

An Edwardian silver vesta, of hinged rectangular form, having all-over foliate engraved decoration and vacant circular cartouche, maker William Neale, Chester 1907; together with an Edwardian silver vesta, of hinged rectangular form, having foliate engraved decoration and shaped vacant cartouche, maker William Hare Haseler, Birmingham 1910; and a late Victorian silver vesta, of rounded rectangular form, having floral engraved decoration and vacant circular cartouche, maker Charles Lyster & Son, Chester 1900 (3)
£60-80



Lot 2089

2087

A George V silver vesta, of plain undecorated flattened circular form, initialled W.E.F., maker Joseph Gloster Ltd, Birmingham 1911; together with a small Edwardian silver vesta, of rounded rectangular form, having floral and C-scroll engraved decoration, maker J.W. Harvey & Co, Birmingham 1902 (2)
£30-50

2091

A circa 1900 French silver vesta, of elongated rectangular form, having domed cover; with geometric decoration, maker possibly Charles Murat; together with a late Victorian silver vesta, of hinged rectangular form, with floral engraved decoration and shaped cartouche, maker S&G, Birmingham 1884 (2)
£40-60



Lot 2091

2088

A late Victorian silver vesta, of hinged rectangular form, having all-over floral engraved decoration and vacant shield shaped cartouche, maker Minshull & Latimer, Birmingham 1898; together with a late Victorian silver vesta, of hinged rectangular form with raised wavy decoration, maker probably Joseph Walton, Birmingham 1888 (2)
£30-50

2092

A late Victorian silver vesta, of wrythen form, engraved C.F. Wells Hornsea, maker William James Dingley, Birmingham 1893; together with a late Victorian silver vesta, of hinged rectangular form, engraved Arnold and dated 1894, maker B.H. Joseph & Co (Barnett Henry Joseph), Chester 1892 (2)
£40-60

2089

An Edwardian silver vesta, of hinged rectangular form, having line engraved decoration and vacant circular cartouche, probably Horton & Allday, Birmingham 1901; together with an Arts & Crafts silver vesta, of hinged rectangular form, having a spot-hammered finish and vacant cartouche, maker Deakin & Francis, Birmingham 1906 (2)
£40-60

All lots plus buyers premium of 24% including VAT

2093

An Edwardian silver vesta, of plain undecorated hinged rectangular form, maker Colen Hewer Cheshire, Chester 1902; together with an late Victorian silver vesta, having all-over foliate engraved decoration and initialled shield shaped cartouche, maker obscured, Chester 1883 (2)
£40-60



Lot 2093



Lot 2094



Lot 2097



Lot 2098



Lot 2095



Lot 2096



Lot 2099



Lot 2100

2094

A late 19th century French silver vesta, of hinged rectangular form, surmounted by a four-leaf clover, maker possibly Jacques Louis & George Murat, Paris circa 1897; together with a late Victorian silver vesta, of hinged rectangular form, having diagonal line engraved decoration, maker Mitchell Bosley & Co, Birmingham 1891 (2)
£40-60

2095

A George V silver vesta, of flattened circular form, having swirling engine turned decoration, maker William Hare Haseler, Birmingham 1922; together with another George V silver vesta, of rounded rectangular form, having floral engraved decoration and vacant cartouche, maker J&R Griffin (Joseph & Richard Griffin), Chester 1920 (2)
£40-60

2096

A late Victorian silver vesta, of hinged rectangular form, having floral engraved decoration and vacant cartouche, maker Minshell & Latimer, Birmingham 1894; together with another late Victorian silver vesta, having leaf and C-scrolling decoration, vacant cartouche, maker Minshell & Latimer, Birmingham 1899 (2)
£40-60

2097

A German Art Nouveau silver vesta, of hinged rectangular form, having sinuous floral decoration, maker GM, circa 1900; together with a French Art Nouveau silver vesta, of hinged rectangular form, having raised sinuous floral decoration, maker Charles Murat, Paris circa 1900 (2)
£50-80

2098

An Edwardian silver vesta, of hinged rectangular form, the front enamel decorated with the arms of Magdalen College, Oxford, inscribed verso 'MADG COLL June 4th 1900 C Bridgewater', maker John William Barrett, Birmingham 1901
£100-150

2099

An Edwardian silver vesta, of plain undecorated hinged rectangular form, with gilt-washed interior; maker William Neale, Chester 1904; together with a late Victorian silver vesta, of serpentine rectangular form, maker Robert Pringle, Birmingham 1900 (2)
£40-60

2100

An Edwardian silver Sirius Patent vesta, of plain undecorated hinged rectangular form, maker Hamilton & Inches, Birmingham 1907; together with a late Victorian silver vesta, of oval form, having all-over foliate engraved decoration and vacant circular cartouche, maker William Neale, Chester 1895 (2)
£50-80

All lots plus buyers premium of 24% including VAT

2101

An Edwardian silver vesta, of hinged rectangular form, the front engraved with the initials AH and dated 12th February 1905, engraved to the reverse Rappeler, maker Sampson Mordan & Co, London 1902, further marked Seamless 31; together with a George V silver vesta, of plain undecorated rounded rectangular form, maker William Henry Sparrow, Birmingham 1912 (2)
£60-80



Lot 2101



Lot 2102



Lot 2103



Lot 2104



Lot 2105

2102

A late Victorian silver vesta, of hinged rectangular form, having line engraved decoration, maker Minshell & Latimer, Birmingham 1881; together with a late Victorian silver vesta, of hinged rectangular form, having all-over clover leaf engraved decoration, with initialled cartouche and gilt-washed interior, maker Joseph Gloster, Birmingham 1886 (2)
£40-60

2103

A late Victorian silver vesta, of plain undecorated rounded and rectangular form, maker George Unite, Birmingham 1875; together with an Edwardian silver vesta, of hinged rectangular form, having foliate engraved decoration, scrolling corners and vacant cartouche, maker Rolason Brothers, Chester 1906 (2)
£40-60

2104

A silver vesta, of hinged rectangular form, with swirling decoration, stamped 925 Sterling, possibly American circa 1900
£20-40

2105

A circa 1900 Austrian silver vesta, of rounded rectangular form, the various roundels depicting St George on horseback amidst raised C-scrolling decoration, with gilt-washed interior, maker Georg Adam Scheid, Austria 1872-1922
£200-250

2106

A George V silver folding double-ended spoon, maker Faterini & Sons, Birmingham 1930; together with an Edwardian silver miniature pepper pot, maker John Edward Wilmot, Birmingham 1900; and a Late Victorian white metal picture locket, of oval form with raised monogram (3)
£20-40

2107

An Edwardian lady's combination cigarette case/compact, of plain undecorated hinged rectangular form, with internal mirror; maker S Blanckensee & Son, Birmingham 1910; together with a George V silver stamp case, of plain undecorated form, maker A.H.J., Birmingham 1914 (2)
£30-50



Lot 2106



Lot 2107

All lots plus buyers premium of 24% including VAT



Lots 2108, 2109

2108

A late Victorian silver sovereign/half-sovereign case, of rounded rectangular form, with spiral reeded decoration, maker Thomas Hayes, Birmingham 1893
£40-60

2109

A George V silver double sovereign case, of rounded rectangular form, having all-over foliate engraved decoration and initialled cartouche, maker William Hare Haseler, Birmingham 1911
£40-60



Lots 2110, 2111, 2112

2110

A late Victorian silver sovereign case, of plain undecorated form, with suspension loop, maker Sampson Mordan & Co, London 1895
£40-60

2111

An Edwardian silver sovereign case, of plain undecorated square form with suspension loop, maker Joseph Gloster & Co Ltd, Birmingham 1910
£30-50

2112

An Edwardian silver sovereign case, of plain undecorated form, having monogrammed cover and suspension loop, maker E.J. Trevitt & Sons, Chester 1906
£30-50

2113

A pair of George III silver dinner plates by Paul Storr (1770-1844), each of typical plain dished form, with gadrooned edges, opposing engraved crested monograms, each incise numbered 18 verso, 36oz, London 1800, dia.25.3cm
£600-900



Lot 2113

2114

A modern silver salver, of shaped square section, with raised piecrust rim, all on claw and ball feet, 44.6oz, maker Joseph Rogers & Sons, Sheffield 1964, 35cm
£500-700



Lot 2114

All lots plus buyers premium of 24% including VAT



Lots 2115, 2116



Lot 2118



Lot 2117

2115

A silver three-piece tea set, in the early 19th century style, comprising teapot, twin handled sugar and cream, each of oval bombe form with reeded edge, the teapot with ebony handle and finial, 28.1oz, maker Hamilton & Co (of Calcutta), London 1917, teapot h.14cm
£300-400

2116

A George V silver three-piece tea set, comprising teapot, twin handled sugar and cream, each of half-reeded oval form, gross weight 27.3oz, maker Goldsmiths & Silversmiths Co Ltd, Sheffield 1918-20, teapot h.15cm
£300-400

2117

An early 20th century continental silver drinks tray, of twin handled oval form, having reeded raised edge, 59.3oz, stamped 900 and AD, 57cm
£500-700

2118

An Edwardian silver wine taster, of ribbed circular form, having cut handle, 6.2oz, maker William Comyns & Sons, London 1903, dia.11.5cm
£100-150

2119

A pair of Edwardian silver candlesticks, in the 17th century style, with double wavy sconces and on domed bases, 11.6oz, maker Wakely & Wheeler, London 1901/2, h.15.5cm
£150-200

2120

A George V silver wine sleeve, having twin applied handles and on ogee base, 14.5oz, maker Daniel & Arter, Birmingham 1912, h.17.5cm
£160-220

2121

A silver three-light candelabrum, in the early 18th century style, having detachable sconce and on multi-knopped stem to a loaded base, maker D.J. Silver Repairs, London 1973, h.28cm
£200-250

2122

A late Victorian silver trumpet form vase, having half spiral fluted and reeded body, 10.5oz, maker Walter & John Barnard, London 1893, h.18cm
£120-180



Lots 2119, 2120, 2121, 2122

All lots plus buyers premium of 24% including VAT



Lot 2123

2123

An Edwardian silver footed rose bowl, the whole chased with flowers and foliage, 29oz, maker Joseph Rogers & Sons, Sheffield 1907, the whole raised on ebonised plinth with silver presentation plaque, dia.28cm
£300-400



Lot 2124

2124

A late Victorian Elkington plate table centrepiece modelled as an ostrich under a palm tree, surmounted with a cut glass bowl, the whole standing on a naturalistically worked and mirrored inset base, both with engraved armorials, gross h.54cm
£500-700



Lot 2125

2125

A George III silver fruit basket, of oblong form on corresponding foot with gadrooned border, the body with double borders of acanthus leaves, scrolls and flower heads, the reeded swing handle with vacant cartouche, 42.5oz, maker Emms & Barnard, London 1817, 38cm
£800-1,200



Lot 2126

2126

A set of three George III silver shell shaped butter dishes, each with bright cut engraving to the handle, mounted with a disc chased with a crest, all raised on three shell feet, 9.5oz, maker John Kidder; London 1872, 14cm
£400-500

All lots plus buyers premium of 24% including VAT



Lots 2127, 2128, 2129

2127

A William III silver chamberstick, of circular form with gadrooned border; the scroll mounted baluster handle being half-fluted with a knopped terminal and later monogrammed, removable drip-pan with gadrooned rim, the conical snuffer connected to the handle by a chain, 11.5oz, makers mark distorted, London 1697, length 21cm
£600-800

2128

A Queen Anne silver chamberstick, of circular form with loop handle, the pedestal baluster and turned candle-holder with removable sconce, conical snuffer with applied handle, 11.6oz, maker Lewis Mettayer, London 1704, dia.12.5cm
£400-600

2129

An early 19th century silver chamberstick, the whole having gadrooned edge and shell capped loop carry handle, ribbed urn shaped candle-holder with gadrooned detachable sconce, 8.5oz, maker William Elliott, London 1818, dia.12cm, with associated white metal conical snuffer (2)
£150-200

2130

A set of four late Victorian silver table salts by Elkington & Co, each of oval bombe form with gadrooned rims and gilt-washed bowls, 11oz, Birmingham 1898, w.8cm
£150-200

2131

A George III silver twin handled sugar bowl, of squat circular form, having floral repoussé decoration, 12.9oz, makers mark rubbed, w.21cm (including handle)
£150-200

2132

An early George II silver bell shaped small tankard, being later monogrammed, raised on an ogee foot, 4.7oz, makers mark worn, London 1730, h.9cm
£100-150

2133

A George II silver sweetmeat basket, of shaped and pierced oval form, the swing handle modelled as entwining floral scrolls, the whole raised on a floral pierced oval foot, 7.7oz, maker Aldridge & Stamper, London 1753, 15cm
£300-400



Lot 2130



Lot 2131, 2132, 2133

All lots plus buyers premium of 24% including VAT

2134

A Victorian silver claret jug, the lobed body with chased floral decoration, raised on a spreading shaped circular foot and with leaf capped double scroll handle and flower head finial, 19.9oz, maker The Barnards, London 1845, h.32cm
£400-600



Lot 2135



Lot 2134



Lot 2136



Lot 2138



Lot 2137

2135

A George V silver three-piece tea set, comprising teapot, twin handled sugar and cream, each of squat circular form with pierced flat rim, the teapot with bakelite handle and finial, engraved armorial and inscribed date, 27oz, maker Walker & Hall, Sheffield 1921, teapot h.13cm
£300-400

2136

A late Victorian silver salver, having a gadrooned piecrust rim, raised on three claw and ball feet, 32.6oz, maker Walter & John Barnard, London 1893, dia.30cm
£400-500

2137

A pair of silver candlesticks, in the mid-18th century style, each having multi-knopped stems and on turned and loaded bases, maker JB Ltd, London 1987, h.16cm
£150-200

2138

A George V pierced silver bowl, of squat circular form, having twin applied leaf capped handles, 24.7oz, makers mark worn, Birmingham 1919, dia.20cm (excluding handles)
£300-400

All lots plus buyers premium of 24% including VAT

2139

An Edwardian silver desk stand, of shaped rectangular form, with shell capped rim, twin glass inkwells with silver hinged covers, 12.1 oz (excluding inkwells), maker William Hutton & Sons Ltd, Sheffield 1907, w.21 cm
£150-200

2140

A late Victorian cased set of four silver shell shaped table salts, raised on dolphinium supports; together with three matching apostle salt spoons, maker Hilliard & Thomason, Birmingham 1880, case w.22cm
£120-180



Lot 2139



Lot 2142



Lot 2143



Lot 2140

2141

A cased set of six late Victorian silver and embossed napkin rings, each with vacant cartouche, 2.7oz, maker William Vale & Sons, Birmingham 1899, case w.16cm; together with a cased set of four silver napkin rings, Sheffield 1889 (2)
£100-150

2143

A Garrard & Co silver Armada dish, having broad flat rim, 11 oz, London 1965, in original fitted velvet and silk lined presentation case
£140-180

2144

A modern silver three-piece cruet set, comprising open table salt with blue glass liner; lighthouse pepperette, and hinged mustard with blue glass liner; maker N Brothers, London 1965, pepper h.10cm
£60-80

2142

A continental white metal card waiter, having raised reeded edge, 3.8oz, stamped Sener 900, 19.5cm; and a white metal oval card waiter, stamped 800, 5.7oz, 20.5cm (2)
£100-140



Lot 2141



Lot 2144

All lots plus buyers premium of 24% including VAT

2145

An early Victorian silver salver, having acanthus leaf cast raised piecrust rim, further C-scroll, acanthus leaf and flower head engraved ground with central armorial, the reverse with presentation inscription, 47oz, maker Hawksworth Eyre & Co, Sheffield 1838, dia.40cm
£700-900



Lot 2145



Lot 2148



Lot 2149



Lot 2146

2146

A Victorian silver calling card case by Nathaniel Mills, bright cut engraved in the Lily of the Valley design, 2oz, Birmingham 1853, h.10cm
£200-300

2147

A pair of Russian silver shell shaped small dishes, each with further scroll leaf chased decoration and raised on three shell feet, 245g, each with 84 zolotnik stamp and numbered 6597, with import marks for St Petersburg, 12.5cm
£150-250

2148

A Russian silver cigarette case, the hinged cover decorated with a cherub amidst a garland of flowers and insects, having gilt-washed interior and inscribed in English verso, 127g, with 84 zolotnik mark, assayed AA probably Anatolii Apollonovich Artsibashev, dated 1891
£80-120



Lot 2147



Lot 2150

2149

A Russian silver mug, bright cut engraved with horse and chariot scene, 141g, with 84 zolotnik mark, St Petersburg 1895, maker PJS, assayer possibly Aleksandr Sewer; h.11cm; together with a Russian silver napkin ring, maker PJJ, 84 zolotnik mark; and a Russian silver and niello butterfly belt buckle with kukri scabbard catch, both sections assayed AA probably Anatolii Apollonovich Artsibashev, St Petersburg, and with 84 zolotnik mark, 11cm (3)
£150-200

2150

A pair of Russian silver tablespoons, each in the Fiddle pattern, 128g, with 84 zolotnik mark, assayer Aleksandr Frans Fan-der-Flit, St Petersburg 1886, 21.5cm
£40-60

All lots plus buyers premium of 24% including VAT



Lot 2151



Lot 2154

2151

A pair of 19th century Maltese silver tablespoons, each in the Fiddle pattern, maker Pace circa 1871, 4.5oz, 21.5cm
£50-70

2152

A harlequin set of nine George III and George IV silver tablespoons, each in the Old English pattern with monogrammed terminals, 18.5oz, various dates and makers but principally London assays 1st quarter 19th century
£200-300

2153

A well-matched set of twelve George III and later silver table forks, in the Hanoverian pattern, some with crested terminals, various dates and makers, London assays and principally circa 1830, gross weight 26.8oz, 20cm
£300-400

2154

A set of four silver soup spoons, maker Walker & Hall, Sheffield 1939, 19cm; together with three matching dessert forks, 1940; one dessert spoon and one tablespoon, gross weight 17.2oz
£200-300

2155

A set of six late Victorian silver dessert forks, in the Hanoverian pattern; together with six dessert spoons in the Old English pattern, gross weight 16.8oz, maker Dobson & Sons (Thomas William Dobson), London 1899/1900
£180-240



Lot 2152



Lot 2153



Lot 2155

All lots plus buyers premium of 24% including VAT



Lot 2156



Lot 2157



Lot 2160



Lot 2159

2156

A matched set of six early Victorian silver dessert spoons, in the Fiddle pattern, each having crested terminals, various dates and makers, London assays; together with a William IV Kings pattern tablespoon, marks worn, gross weight 12.1oz (7)
£120-180

2157

A set of seven late Georgian silver dessert forks, in the Hanoverian pattern, each with crested terminals, 8oz, maker William Eley & William Fearn, London 1816, 16cm
£80-120

2158

A collection of George III and later silver teaspoons, principally in the Old English pattern, most with crested terminals and a small number with monogrammed terminals, various dates and makers but principally London circa 1830; together with a single salt spoon, 10.7oz; and sold with a silver topped horn spoon, Chester 1905 (18)
£120-180

2159

A set of six William IV Irish silver table forks, in the Fiddle pattern, each having crested terminals, 15.8oz, maker SG, Dublin 1831, 21.5cm
£200-300

2160

A late Georgian silver part cutlery suite, in the Fiddle & Shell pattern, comprising a pair of stuffing spoons, six tablespoons, six dessert spoons, and twelve teaspoons, each with armorial engraved terminals, 42oz, all except the teaspoons by Josiah & George Piercy, London 1818, teaspoons maker Thomas Wilkes Barker, London 1819
£500-700

2161

A matched set of fourteen George IV and William IV silver teaspoons, each in the Fiddle & Thread pattern, with armorial engraved terminals, 11.6oz, makers Charles Eley and Mary Chawner, London assays, 1825 and 1831
£120-180



Lot 2158



Lot 261

All lots plus buyers premium of 24% including VAT



Lot 2162



Lot 2163



Lot 2164



Lot 2165



Lot 2167

2162

A set of twelve Victorian Scottish silver teaspoons, each finely chased to front and back with vine leaves; together with matching sugar bows, 7oz, maker possibly William Sturrock, Glasgow 1884, 13cm
£100-150

2163

A set of eight George V silver tablespoons, in the Old English pattern, 18.9oz, maker James Deakin & Sons, Sheffield 1911, 22cm
£200-250

2164

A George III silver tablespoon, in the Fiddle pattern, maker Paul Storr; London 1815; a later example by William Eaton, London 1827; another by Charles Boyton, London 1842; one in the Old English pattern by Stephen Adams, London 1788; and two English silver dessert spoons, gross weight 10.9oz (6)
£120-180

2165

George III and later silver flatware, in both the Old English and Fiddle patterns, to include five various tablespoons and ten dessert spoons, some with monogrammed terminals, various dates and makers but principally London assays and 1st quarter 19th century, 20.9oz
£200-300

2166

An Edwardian silver christening set, comprising dessert knife, fork and spoon, the handles each chased with a bird amidst C-scrolls, flowers and foliage, maker Frederick Highland, London 1907, in fitted case w.24cm
£80-120

2167

A cased set of six silver and guilloche enamel teaspoons, each enamelled in different colours, maker Turner & Simpson Ltd, Birmingham 1956, case w.16cm
£100-150



Lot 2166

All lots plus buyers premium of 24% including VAT



Lot 2168



Lot 2169



Lot 2170



Lot 2171

2168

A pair of William IV silver grape scissors, the handles each cast with fruiting vines, 4.7oz, maker Charles Rawlings & William Summers, London 1836, 19cm
£120-180

2169

A Regency period silver coffee pot, having waisted upper section, scroll carved walnut handle, half-reeded lower section, 24.1oz, maker Solomon Hougham, London 1812, h.21cm
£500-600

The following 28 lots comprise a single-owner collection of silver items made by Hester Bateman (1708-1794), probably England's most renowned female silversmith. She successfully ran her family business for thirty years following the death of her husband John in 1760. She was succeeded in turn by her sons, daughter-in-law, grandson and great-grandson, and the Bateman family silversmithing company lasted until the middle of the nineteenth century.

2170

A George III silver wine funnel, the beaded muslin holder intact, detachable reeded and beaded spout, 2.9oz, maker Hester Bateman, London 1787, 12.5cm
£600-800

2171

A George III white metal cruet stand, of pierced oval form with bright cut engraved decoration, fitted for five bottles (missing), the whole raised on four silver claw and ball feet, the feet with Hester Bateman makers mark and lion passant, w.18cm
£180-250

All lots plus buyers premium of 24% including VAT

2172

A George III silver twin handled loving cup, having single reeded band and waisted pedestal to a brass base, gross weight 12.2oz, maker Hester Bateman, London 1789, h.15cm
£500-600



Lot 2172



Lots 2176, 2177



Lot 2173

2173

A set of four George III silver pedestal table salts, each of crested oval form with blue glass liners, on reeded oval bases, 9.2oz, maker Hester Bateman, London 1786, 10cm
£500-700

2174

A pair of George III silver crested boat shaped pedestal table salts, having gilt-washed interiors and reeded oval lead weighted bases, maker Hester Bateman, London 1789, 10.5cm
£300-400

2175

A pair of George III silver table salts, each of pierced oval form with bright cut scroll leaf decoration, blue glass liners, and raised on claw and ball feet, 3.6oz, maker Hester Bateman, London 1785, 8.5cm
£180-240



Lots 2174, 2175

2176

A George III silver pedestal lighthouse pepperette, having bright cut and finial topped pierced dome cover, all on beaded foot, 2.3oz, maker Hester Bateman, London 1781, h.13.5cm
£180-240

2177

A George III silver pedestal cream jug, of helmet form, having leaf capped double S-scroll handle, 2.6oz, maker Hester Bateman, London 1781, 12cm
£250-300

All lots plus buyers premium of 24% including VAT

2178

A George III silver teapot stand. of beaded oval form, having engraved monogram, all raised on claw and ball feet, 5oz, maker Hester Bateman, London 1784, 15.5cm
£160-240



Lot 2178



Lot 2179



Lot 2183



Lot 2180

2179
A George III silver decanter label for Gin, with chain, maker Hester Bateman, no date letter struck, 5cm
£120-180

2183
A pair of George III silver sauce ladles, in the Old English pattern, undecorated, 1.4oz, maker Hester Bateman, London 1783, 14cm
£150-200



Lot 2181

2180
A George III silver decanter label for Madeira, with chain, maker Hester Bateman, no date letter struck, 5cm
£120-180

2184
A set of six George III silver teaspoons, each in the Old English pattern, having feather banded edges, each monogrammed WM, 2.5oz, maker Hester Bateman, London 1787, 12.5cm
£140-180



Lot 2182

2181
A George III silver decanter label for Lisbon, with chain, maker Hester Bateman, no date letter struck, 5cm
£120-180

2182
A George III silver sifting spoon, of small proportions, in the Old English pattern with beaded handle, pierced bowl, 0.3oz, maker Hester Bateman, struck with makers mark and lion passant only, 9cm
£60-80



Lot 2184

All lots plus buyers premium of 24% including VAT



Lot 2187



Lot 2188



Lot 2190



Lot 2189



Lot 2191

2185

A George III silver meat skewer, undecorated, with ring terminal, 2.2oz, maker Hester Bateman, London 1783, 17.5cm
£180-240

2187

A pair of George III silver tablespoons, in the Old English pattern, each having feather banded edges and monogrammed terminals, 4.1oz, maker Hester Bateman, London 1782, 21.5cm
£200-300

2189

A set of four George III silver dessert spoons, in the Old English pattern, with engraved armorial and feather banded edges, 4.4oz, maker Hester Bateman, London 1773, 17.5cm
£200-300

2186

A George III silver teaspoon, in the Old English pattern, having leaf engraved terminal, maker Hester Bateman, London 1790; and one other, no makers mark struck, having feather banded edge, London 1790, gross weight 0.7oz (2)
£30-40

2188

A matched set of six George III silver tablespoons, in the Old English pattern, two with monogrammed terminals, 11.1oz, maker Hester Bateman, London 1782-1786, 21.5cm (6)
£200-250

2190

A George III silver stuffing spoon, in the Old English pattern, 3.3oz, maker Hester Bateman, London 1784, 31cm
£170-220

2191

A George III silver stuffing spoon, in the Old English pattern, 3.1oz, maker Hester Bateman, London 1790, 29.5cm
£140-180



Lot 2185



Lot 2186

All lots plus buyers premium of 24% including VAT



Lot 2192



Lot 2193



Lot 2197



Lot 2198

2192

A pair of George III silver serving spoons, in the Old English pattern, each having bright cut engraved handles and bowls, 6oz, maker Hester Bateman, London 1786, 28cm
£300-400

2195

A pair of George III silver sauce ladles, in the Old English pattern, 3oz, maker Hester Bateman, London 1788, 17.5cm
£100-150

2193

A George III silver sifting spoon, in the Old English pattern, with crested terminal and 'star' pierced bowl, 1oz, maker Hester Bateman, London 1790, 15.5cm
£60-80

2196

A George III silver soup ladle, in the Old English pattern with bright cut feather banding and shell shaped bowl, 7oz, maker Hester Bateman, London 1782, 37cm
£350-450

2194

A pair of George III silver sauce ladles, in the Old English pattern, with monogrammed terminals, 3oz, maker Hester Bateman, London 1782, 18cm
£100-150

2197

A pair of George III silver sugar bows, each having bright cut decoration, monogrammed RMB, 1oz, maker Hester Bateman, no date letter struck, 14cm
£60-90

2198

A pair of George III silver sugar tongs, having bright cut decoration, monogrammed RMB, 0.9oz, maker Hester Bateman, no date letter struck, 12.5cm
£60-80



Lot 2194



Lot 2195



Lot 2196

All lots plus buyers premium of 24% including VAT



JEWELLERY & WATCHES

2202

A yellow metal, topaz and diamond pear shaped cluster ring, featuring a centre pear cut blue topaz within a halo of 38 single cut diamonds, with eight single cut diamonds in each shoulder, all in claw settings, topaz dimensions approx 14.0 x 11.8 x 7.35mm, weight estimated as 8.74 carats, diamond diameters each approx 1.0mm, total weight estimated as 0.27 carats, gross weight 5.1g, stamped and tested as 14ct
£400-600

2203

A pair of 18ct yellow gold diamond rings, to include a cushion shaped cluster ring featuring a centre round brilliant cut diamond within a border of 12 inner and 20 outer melee cut diamonds, with two rows of 6 melee cut diamonds in each shoulder and a diamond set either side of the bezel, all in micro-claw settings, centre diamond dimensions approx 3.65 x 2.35mm, weight estimated as 0.19 carats, melee cut diamond dimensions each approx 1.3 x 1.5 x 0.9mm, total weight estimated as 0.56 carats; and a two-row diamond half hoop eternity ring, each row with 17 melee cut diamonds in micro-claw settings, diamond dimensions each approx 1.2 x 0.8mm, total weight estimated as 0.23 carats, diamonds assessed mounted collectively colour H to I and clarity I1 to I2, both rings size R, gross weight 6.4g, both hallmarked 18ct, London, no date, sponsor SG
£400-600

2204

A white metal, green tourmaline and diamond rectangular cluster ring, comprising a step cut tourmaline within a border of 32 single cut diamonds, with a further five set in each shoulder, all in claw and grain settings, with pierced gallery and engraved shoulders, tourmaline dimensions approx 8.55 x 7.65 x 5.35mm, weight estimated as 2.81 carats, diamond diameters each approx 1.0mm, total weight estimated as 0.21 carats, gross weight 4.9g, size M½, stamped and tested as 14ct
£300-400

2205

Two pairs of cufflinks, being a pair of 18ct yellow gold oval double-ended cufflinks, with engine turned finish, gross 12.4g, hallmarked 18ct, London 1916, sponsor WJH, and a pair of yellow metal cufflinks comprising an oval engine turned link and a torpedo shaped end, gross weight 2.3g, stamped and tested as 9ct
£350-450



All lots plus buyers premium of 24% including VAT



2206

A pair of yellow metal citrine drop earrings, each with a briolette cut citrine suspended from a fancy engraved openwork chain, with screw fittings, each citrine dimensions approx 25 x 14 x 8.8mm, total weight estimated as 33.26 carats, chain lengths each 30mm, gross weight 10.2g, stamped and tested as 14ct
£120-180



Lots 2206, 2207, 2208, 2209

2207

A pair of 18ct white gold diamond bubble design half hoop earrings, each with eight round brilliant cut diamonds in rubover settings, with post and Omega fittings, diamond dimensions between approx 2.0 x 1.4mm and 2.5 x 1.75mm, total weight estimated as 0.72 carats, assessed mounted collectively colour G to H and clarity SI1 to SI2, gross weight 7.3g, hallmarked 18ct, London 2009, sponsor LW
£400-600

2208

A pair of white metal diamond three-stone drop earrings, each comprising three graduated round brilliant cut diamonds in claw settings, with post and scroll backs, diamond diameters each between approx 2.8 and 3.75mm, total weight estimated as 0.82 carats, assessed mounted collectively colour J to K and clarity SI1 to SI2, gross weight 1.4g, stamped and tested as 14ct
£300-500

2209

A pair of white metal, pearl and diamond drop earrings, the earrings each featuring a pearl drop measuring 13.5 x 10.1mm, suspended below a round brilliant cut diamond and a trefoil of marquise shaped diamonds, with post and scroll fittings, brilliant cut diamond dimensions each approx 2.0 x 1.35mm, total weight estimated as 0.06 carats, marquise shaped diamond dimensions each approx 4.25 x 2.4 x 1.75mm, total weight estimated as 1.02 carats, assessed mounted collectively colour J to K and clarity SI1 to SI2, gross weight 5.2g, stamped and tested as 18ct
£600-800

2210

A yellow and white metal, peridot and diamond floral brooch, featuring a centre heart shaped peridot within a diamond set floral wreath, with roller catch fastening and pendant loop, peridot dimensions approx 12.6 x 12.0 x 7.5mm, weight estimated as 6.81 carats, diamond diameters between approx 1.5 x 2.35mm, total weight estimated as 0.82 carats, brooch dimensions 32 x 31mm, gross weight 10.8g, not marked but tested as 18ct
£800-1,200

2211

A late Victorian yellow and white metal scrollwork brooch, featuring sixty-four Old European and rose cut diamonds, in cut-down grain settings, with detachable brooch fitting, diamond diameters between approx 1.2 and 4.0mm, total weight estimated as 2.80 carats, assessed mounted collectively colour I to J and clarity SI1 to I1, brooch dimensions 35 x 28mm, gross weight 7.7g, not marked but tested as 15ct and silver
£600-800



Lots 2210, 2211

All lots plus buyers premium of 24% including VAT

Lots 2212, 2213, 2214, 2215



2212

An 18ct white gold, pink sapphire and diamond half hoop eternity ring, featuring three rectangular cut pink sapphires alternating with four emerald cut diamonds, in channel settings, pink sapphire dimensions each approx 3.6 x 3.3 x 2.45mm, total weight estimated as 0.90 carats, diamond dimensions each approx 3.2 x 2.35 x 1.6mm, total weight estimated as 0.44 carats, assessed mounted collectively colour G to H and clarity VS1 to VS2, gross weight 4.4g, size N, hallmarked 18ct, London 2005, sponsor TT
£200-300

2213

An 18ct white gold diamond five-stone shaped half hoop eternity ring, comprising five round brilliant cut diamonds in claw settings, diamond dimensions between approx 4.15 x 2.55mm and 4.25 x 2.65mm, total weight estimated as 1.36 carats, assessed mounted collectively colour H to I and clarity SI1 to SI2, gross weight 5.0g, size N½, hallmarked 18ct, London 2007, sponsor V&Co
£600-800

2214

An 18ct white gold Happy Diamond ring by Chopard, comprising a 9.9mm square head with a 2.2mm floating round brilliant cut diamond, weight estimated as 0.03 carats, gross weight 11.5g, with sizing beads to inside of band, hallmarked 18ct, Austria, Chopard 2938-20
£300-400

2215

A 9ct white gold diamond full hoop ring, featuring eight round brilliant cut diamonds inset within a 3.35mm D-shaped band, diamond diameters each approx 1.5mm, total weight estimated as 0.08 carats, size K, gross weight 2.6g, hallmarked 9ct, Birmingham, Millennium mark, sponsor SL
£150-200

2216

An 18ct white gold diamond tennis bracelet, featuring fifty-two round brilliant cut diamonds in claw settings, with box clasp and two figure of eight safety catches, diamond dimensions each approx 2.75 x 1.65mm, total weight estimated as 3.64 carats, assessed mounted collectively colour I to J and clarity I1 to I2, length 190mm, gross weight 13.5g, hallmarked 18ct, Sheffield, no date, sponsor VJ
£1,000-1,500



Lot 2216

All lots plus buyers premium of 24% including VAT



Lot 2217



Lot 2220



Lot 2218



Lot 2219

2217
A Victorian gold full sovereign dated 1852 with a six-ray star set in one side, having thirteen rose cut diamonds, diameters between approx 0.9 x 3.5mm, the sovereign held in a yellow metal scrollwork mount, gross weight 8.9g
£200-300

2218
A selection of four boxed pieces of Tiffany jewellery, comprising a silver oval link necklet with trigger clasp and oval signed Tiffany disc at ring end, length 385mm, gross weight 53.4g, hallmarked sterling silver; London 2000, sponsor T&Co; a silver oval link bracelet with trigger clasp and engraved circular disc at clasp end, length 180mm, gross weight 35.1g, hallmarked sterling silver; London 2000, sponsor T&Co; a silver heart locket, diameter 30mm, gross weight 12.7g, hallmarked sterling silver; London 2009, sponsor T&Co; and a silver oval belcher link bracelet with 15 engraved heart shaped links, all approx dia. 1.2mm, with a lobster clasp, length 180mm, gross weight 15.8g, hallmarked sterling silver; London 2001, sponsor T&Co (4)
£250-350

2219
A selection of four pieces of Tiffany jewellery, comprising a white metal bead bracelet, featuring seventeen 10mm beads threaded on an angled trace link chain with lobster clasp and disc signed Tiffany & Co, length 190mm, gross weight 18.9g, stamped and tested as sterling silver; a white metal bead chain with lobster clasp, length 450mm, chain w.2.45mm, gross weight 8.2g, stamped Tiffany & Co, tested as sterling silver; a white metal abstract open heart pendant by Elsa Peretti for Tiffany & Co, with a trace link chain and bolt ring clasp, chain length 450mm, width 0.7mm, gross weight 2.7g, stamped and tested as sterling silver; and a silver bead chain with heart shaped pendant signed Tiffany & Co, New York M29648, length 860mm, width 2.5mm, gross weight 22.3g, hallmarked sterling silver; London 2007, T&Co (4)
£250-350

2220
An 18ct yellow gold Cicladi pendant by Bulgari, featuring seven rotating discs of varying sizes, attached to an oval trace link chain with lobster clasp and three adjustable rings, pendant length 35mm, chain length 450mm, width 1.8mm, gross weight 16.2g, signed Bulgari Made in Italy, hallmarked 18ct Austria
£1,000-1,500

All lots plus buyers premium of 24% including VAT

Lots 2222, 2223, 2224, 2225, 2226, 2227



2221

An opera length row of 192 baroque freshwater pearls, strung knotted with a white metal hinged pearl divider; overall length 176cm, pearl dimensions each approx 9.0 x 8.5mm, gross weight 149.3g
£250-400

2222

A white metal, tourmaline and diamond rectangular cluster ring, featuring a centre rectangular green tourmaline within a border of 14 single cut diamonds, with a marquise cut diamond to each shoulder; all in claw settings with a triple banded shank, tourmaline dimensions approx 9.89 x 7.85 x 4.95mm, weight estimated as 3.25 carats, marquise cut diamond dimensions each approx 4.5 x 2.25 x 1.7mm, total weight estimated as 0.20 carats, single cut diamond dimensions each approx 2.0 x 1.2mm, total weight estimated as 0.42 carats, size N, gross weight 6.5g, not marked but tested as 18ct
£600-800

2223

A late Victorian yellow and white metal, ruby and diamond marquise shaped cluster ring, comprising a centre oval faceted ruby with a border of twenty Old European cut diamonds, all in claw settings, with beaded shoulders, ruby dimensions approx 3.35 x 3.1 x 1.9mm, weight estimated as 0.17 carats, diamond dimensions between approx 1.8 x 1.75 x 1.75mm and 2.5 x 2.75 x 1.89mm, total weight estimated as 1.40 carats, size J, gross weight 3.5g, not marked but tested as 15ct with silver settings
£400-600

2224

A yellow and white metal marquise shaped panel cluster ring, comprising 33 Old European cut diamonds and one rose cut diamond, all in grain settings, principle diamond dimensions approx 5.3 x 5.1 x 2.51mm, weight estimated as 0.44 carats, remaining diamond dimensions between approx 2.0 x 1.5mm and 2.85 x 2.9mm, total weight estimated as 1.28 carats, assessed mounted collectively colour K to L and clarity SI1 to I2, gross weight 3.9g, size M½, stamped and tested as 18ct
£800-1,200

2225

A yellow metal, ruby and diamond oval cluster ring, featuring an oval faceted ruby within two borders of round brilliant cut diamonds, 32 in total, all in claw settings with bifurcated shoulders, ruby dimensions approx 8.0 x 5.95 x 4.5mm, weight estimated as 2.02 carats, diamond diameters between approx 1.2 and 2.0mm, total weight estimated as 0.62 carats, size N½, gross weight 5.0g, stamped and tested as 18ct
£500-700

2226

A white metal diamond circular cluster ring, featuring 17 round brilliant cut diamonds in tiered claw settings, centre diamond dimensions approx 4.2 x 2.65mm, weight estimated as 0.28 carats, the remaining diamond dimensions between approx 2.2 x 1.5mm and 3.0 x 1.8mm, total weight estimated as 1.04 carats, assessed mounted colour K to M and clarity SI2 to I1, size M½, gross weight 7.6g, not marked but tested as 18ct
£400-600

2227

A white metal diamond cocktail ring, having ten round brilliant cut diamonds in tiered settings to the centre, within a stepped border of fourteen tapered baguette cut diamonds, all in claw settings, brilliant cut diamond diameters between approx 3.5 and 5.1mm, total weight estimated as 2.17 carats, tapered baguette diamond dimensions each approx 6.5 x 2.0 x 1.5mm, total weight estimated as 2.80 carats, assessed mounted collectively colour I to J and clarity SI1 to SI2, size L, gross weight 11.0g, not marked but tested as 18ct
£2,500-3,500

2228

An early 19th century yellow metal miniature portrait memorial pendant, depicting a child's profile with a lock of hair to the back, dimensions 47 x 38mm, gross weight 21.2g, not marked but tested as 15ct
£150-250



Lot 2221



Lot 2228

All lots plus buyers premium of 24% including VAT



Lot 2229

2229

An 18ct white gold Chopard 'Love' pendant, featuring a 31x28mm heart shaped pendant with the word Love set with 46 round brilliant cut diamonds suspended below a heart shaped bale pavé set with 33 round brilliant cut diamonds, attached to an Omega wire with peg style clasp, diamond diameters each approx 1.3 to 1.5mm, total weight estimated as 0.79 carats, Omega wire length 390mm, width 2.3mm, gross weight 38.9g, hallmarked 18ct, Austria, Chopard 2918830 79/3813/0
£1,400-1,800

2230

An 18ct white gold Happy Diamond hinged oval bangle by Chopard, featuring a 10mm square with a 2.2mm floating round brilliant cut diamond, weight estimated as 0.03 carats, bangle diameter 60 x 51 mm, bangle width 6.0mm, gross weight 30.3g, hallmarked 18ct, Austria, Chopard 9874959 85/2938-20
£1,000-1,500

2231

A pair of 18ct white gold Happy Diamond earrings by Chopard, each featuring a 10.1mm square with a 2.2mm floating round brilliant cut diamond, total weight estimated as 0.06 carats, with post and Alpha backs, gross weight 9.9g, hallmarked 18ct, Austria, Chopard, 83/2938-20 9783909
£400-600



Lot 2230



Lot 2231

All lots plus buyers premium of 24% including VAT

Lots 2237, 2238, 2239, 2240



2232

A pair of 18ct yellow gold diamond hoop earrings, each featuring 20 round brilliant cut diamonds, to include eight on the inside, in grain settings and with post and scroll fittings, diamond diameters each approx 1.5mm, total weight estimated as 0.40 carats, gross weight 3.1g, hallmarked 18ct, London 1982, sponsor PJW
£300-400

2233

An early 20th century white metal diamond bow brooch, comprising 166 Old European and rose cut diamonds (one deficient) in pavé settings, with a base metal roller catch fastening, diamond diameters between approx 1.3 x 2.5mm, total weight estimated as approx 4.24 carats, assessed mounted collectively colour I to J and clarity SI1 to II, brooch dimensions 37 x 27mm, gross weight 9.2g, not marked but tested as platinum
£1,000-1,500

2234

A pair of yellow metal aquamarine earrings, each featuring an octagonal cut aquamarine in a six claw setting, with screw fittings, aquamarine dimensions each approx 9.19 x 6.85 x 5.6mm, total weight estimated as 5.34 carats, gross weight 3.1g, stamped and tested as 15ct
£200-300

2235

An 18ct gold diamond set suite of jewellery, comprising pendant on neck chain, single ring, and pair of ear studs, each arranged with a centre cluster of seven round brilliant cut diamonds, within a surround of two rows of baguettes, the pendant on finelink neck chain, ring size M, ring and pendant 1.9cm, ear studs each 1.6cm, total diamond weight estimated at approx 11ct, gross weight 18.8g
£3,500-4,500

2236

A pair of 18ct white gold diamond cluster earrings, each featuring six marquise shaped diamond claw set in leaf design, with post and Omega fittings, diamond dimensions each approx 6.0 x 2.8 x 2.0mm, total weight estimated as 2.28 carats, gross weight 5.3g, hallmarked 18ct, Edinburgh, no date, sponsor HJ
£1,200-1,800

2237

A white metal diamond full hoop eternity ring, with twenty-two Old European cut diamonds in scalloped claw settings, diamond dimensions between approx 2.5 x 1.7mm and 2.65 x 2.7 x 1.9mm, total weight estimated as 1.63 carats, assessed mounted collectively colour J to K and clarity SI2 to II, size R, gross weight 4.8g, not marked but tested as platinum
£400-600

2238

A white metal diamond eleven-stone half hoop eternity ring, featuring eleven round brilliant cut diamonds in grain settings, diamond dimensions each approx 2.75 x 1.6mm, total weight estimated as 0.77 carats, assessed mounted collectively colour I to J and clarity SI2 to II, size R, gross weight 3.6g, not marked but tested as 18ct
£400-600

2239

An 18ct white gold diamond solitaire ring, featuring a round brilliant cut diamond in a four-claw setting, diamond dimensions approx 5.5 x 5.4 x 3.3mm, weight estimated as 0.60 carats, assessed mounted colour G to H and clarity SI1 to SI2, size K, gross weight 3.7g, hallmarked 18ct, Sheffield, no date, sponsor EMF
£400-600

2240

A white metal diamond three-stone ring, featuring a round brilliant cut diamond in a six claw setting, with a baguette cut diamond bezel set in each shoulder; principle diamond dimensions approx 6.75 x 6.7 x 3.65mm, weight estimated as 1.00 carat, baguette cut diamond dimensions each approx 2.9 x 2.0 x 1.5mm, total weight estimated as 0.16 carats, assessed mounted collectively colour M to N and clarity SI1 to SI2, size O½, gross weight 4g, stamped and tested as 18ct
£1,200-1,800

2241

A white metal diamond seven-stone half hoop eternity ring, comprising seven round brilliant cut diamonds in millegrain channel settings, diamond dimensions each approx 4.0 x 2.21mm, total weight estimated as 1.47 carats, assessed mounted collectively colour I to J and clarity SI2 to II, gross weight 5.3g, size V, not marked but tested as 18ct
£800-1,000

2242

A white metal, sapphire and diamond full hoop eternity ring by Tiffany & Co, comprising 13 round faceted sapphires and 12 round brilliant cut diamonds in claw settings, sapphire dimensions each approx 2.8 x 1.85mm, total weight estimated as 1.56 carats, diamond dimensions each approx 2.75 x 1.7mm, total weight estimated as 0.84 carats, size N, gross weight 4.3g, stamped Tiffany & Co 950 and tested as platinum
£1,200-1,800

Lots 2241, 2242



All lots plus buyers premium of 24% including VAT

2243

A yellow metal diamond single stone pendant, comprising a round brilliant cut diamond in an eight-claw setting, with solid bale, diamond diameter approx 6.0mm, weight estimated as 0.80 carats, assessed mounted colour J to K and clarity II to I2, attached to a 9ct yellow gold filed curb link chain with bolt ring clasp, length 455mm, width 1.2mm, gross weight 3.5g, hallmarked 9ct, Sheffield import, no date, sponsor HL
£500-700

2244

A white metal, pearl and diamond pendant, the pendant comprising a pearl drop measuring 13 x 10.5mm, suspended below a trifurcated bale set with six round brilliant cut diamonds attached to a single round brilliant cut diamond, diamond diameters between approx 1.0 and 3.0mm, total weight estimated as 0.12 carats, attached to an integral trace link chain with trigger clasp, chain length 400mm, width 0.8mm, gross weight 5.4g, not marked but tested as 18ct
£300-400

2245

An 18ct white gold Boodle & Dunthorne blue topaz and diamond pendant, comprising a Princess cut blue topaz within a border of 28 round brilliant cut diamonds, with four stepped sections set with a further 12 round brilliant cut diamonds in total, attached to an integral trace link chain with four round brilliant cut diamonds at intervals, terminating with a trigger clasp and Boodles bead, topaz dimensions approx 8.0 x 8.0 x 5.35mm, weight stated as 2.60 carats, diamond diameters each between approx 1.3 and 1.5mm, total weight estimated as 0.44 carats, chain length 430mm, width 0.9mm, gross weight 7.7g, hallmarked 18ct, London 2012, sponsor B&D, in Boodles box
£500-700



Lots 2243, 2244, 2245 2246

2246

A white and rose metal, pink sapphire and diamond abstract heart pendant, attached to a fine trace link chain with trigger clasp, having 30 round pink sapphires, each approx 1.65 x 1.3mm, total weight estimated as 0.90 carats, and eleven round brilliant cut diamonds, diameters between approx 1.3 and 1.6mm, total weight estimated as 0.09 carats, pendant diameter 17mm, chain length 390mm, width 1.0mm, gross weight 5.1g, stamped and tested as 18ct
£400-600

2247

A pair of yellow metal double-ended sapphire cylindrical bar cufflinks, each featuring two 21mm ridged cylinders interlinked by a stirrup shaped bar with 24 1.8mm square cut sapphires in channel settings, sapphire total weight estimated as 2.40 carats, cufflink length 25mm, gross weight 11.2g, French eagle head mark for 18ct and tested as 18ct, engraved V.C.A. and purported to be Van Cleef & Arpels, in fitted box
£800-1,200

2248

A pair of yellow metal diamond cross shaped earrings, each with twelve round brilliant cut diamonds in grain settings, with post and scroll fittings, diamond diameters each approx 2.5 x 1.55mm, total weight estimated as 1.44 carats, gross weight 4.9g, stamped and tested as 18ct
£400-500

2249

A pair of yellow metal diamond single stone stud earrings, each featuring a round brilliant cut diamond in a six-claw setting, with post and scroll fittings, diamond diameters each approx 4.95mm, total weight estimated as 0.88 carats, assessed mounted collectively colour J to K and clarity II to I2, gross weight 4.9g, not marked but tested as 14ct
£400-600



Lots 2247 2248, 2249

All lots plus buyers premium of 24% including VAT



Lot 2250

2250

An early 20th century embroidered beadwork collar, featuring metallic threadwork interwoven over a chiffon background with a combination of simulated pearls, red cylindrical plastic beads, yellow filigree beads, and small coral and turquoise coloured rondels, beads untested due to delicacy of fabric, collar length 740mm
£80-120

2251

A four-row pearl choker, featuring four rows of 60, 57, 55 and 56 approx 5.1 to 5.3mm cultured pearls, strung knotted to a 9ct yellow gold oval clasp with a smoky quartz and 21 approx 3.25mm seed pearls surrounding, smoky quartz dimensions approx 21.5 x 15.2 x 8.0mm, weight estimated as 16.8 carats, overall length 340mm, gross weight 58.9g, clasp hallmarked 9ct, Birmingham 1991, sponsor MP
£300-400

2252

A single row of twenty-seven 12.0 to 20mm round banded agate beads, strung knotted to a base metal cylinder clasp, length 470mm, gross weight 96.1g; together with a pair of yellow metal earrings, each with a round banded agate cabochon in a ropetwist surround, with screw fittings, diameters each 20mm, gross weight 9.2g, not marked but tested as 9ct (2)
£80-120



Lots 2251, 2252, 2253

2253

A three-row pearl necklet, comprising three rows of 69, 74 and 78 approx 5.5 to 5.8mm cultured pearls, strung plain to an 18ct white gold, sapphire and pearl circular cluster clasp, the 18 round faceted sapphire dimensions each approx 2.0 x 1.4mm, total weight estimated as 0.72 carats, with seven 3.2mm seed pearls set in the centre, length 430mm, gross weight 69.2g, partial hallmark for 18ct, sponsor LPC
£300-400

2254

A pair of yellow and white metal, synthetic ruby and emerald leaf shaped cluster earrings, each comprising a centre 5.35 x 4.9mm octagonal cut emerald surrounded by 22 vari-but synthetic rubies, all in cut-down grain settings, with later post and scroll fittings, synthetic ruby dimensions between approx 2.0 x 1.35mm and 3.5 x 2.51mm, total weight estimated as 3.92 carats, earring lengths each approx 25mm, gross weight 9.8g, not marked but tested as silver and 15ct
£200-300



Lot 2254

All lots plus buyers premium of 24% including VAT



Lots 2255, 2256, 2257, 2258

2255

A yellow metal coral beetle brooch, comprising a round red coral cabochon set in the abdomen enclosed within engraved wings, brooch length 20mm, gross weight 3.4g, not marked but tested as 18ct
£100-150

2256

A yellow metal engraved scrollwork oval brooch, featuring a centre oval panel with a Roman figure tending a plant in relief against a dark background, with a hook clasp and safety chain, brooch dimensions approx 57 x 45mm, gross weight 19.5g, not marked but tested as 15ct
£300-400

2257

A late Victorian yellow metal Etruscan style memorial bar brooch, comprising a central oval removable panel with section for hair; set with an Old European cut diamond, diamond dimensions approx 2.75 x 1.9mm, weight estimated as 0.09 carats, the border set with 24 blue and white enamel forget-me-not flowers, with hook style clasp, brooch length 53mm, gross weight 6.7g, stamped and tested as 15ct
£100-150

2258

A 9ct yellow gold swivel fob pendant, comprising two oval 18 x 14mm panels, with bloodstone and carnelian, one panel engraved with the initials JNS, pendant length 30mm, gross weight 8.8g, hallmarked 9ct, Chester 1924, sponsor worn
£120-180

2259

An 18ct yellow gold Louis Vuitton Idylle monogram bracelet, featuring six openwork blossom symbols with initials LV in the centre, threaded on to an oval trace link chain with lobster clasp, length 170mm, gross weight 11.1g, hallmarked 18ct with eagle head for France, sponsor LV, with LV pouch and outer box
£800-1,200

2260

An 18ct white gold Louis Vuitton Idylle blossom monogram bracelet, featuring six openwork floral motifs with LV initials in the centre, threaded to an oval trace link chain with lobster clasp, length 165mm, gross weight 11.0g, hallmarked 18ct, eagle head mark for France, sponsor LV, with LV pouch and outer box
£800-1,200

2261

A pair of 18ct white gold Louis Vuitton button stud earrings, each engraved Louis Vuitton to the front, with post and alpha fittings, earring diameters approx 8.0mm, gross weight 2.9g, hallmarked 18ct, Austria, sponsor LV, engraved HCA930, in fitted case
£200-300

2262

A pair of 18ct yellow gold Louis Vuitton button stud earrings, each engraved Louis Vuitton to the front, with post and alpha fittings, earring diameters approx 8.0mm, gross weight 2.8g, hallmarked 18ct, Austria, sponsor LV, engraved HCB086, in fitted case
£200-300



Lots 2259, 2260, 2261, 2262

All lots plus buyers premium of 24% including VAT

2263

A yellow metal heavy textured diamond openwork leaf shaped cluster ring, featuring six single cut diamonds in white marquise shaped settings, diamond diameters each approx 1.5mm, total weight estimated as 0.06 carats, size N½, gross weight 7.1g, stamped and tested as 18ct £300-400



Lots 2263, 2264, 2265

2264

A yellow and white metal diamond five-stone half hoop eternity ring, featuring five graduated round brilliant cut diamonds in illusion settings, diamond dimensions between approx 3.3 x 2.0, and 4.6 x 2.71mm, total weight estimated as 1.0 carats, size S, gross weight 5.8g, not marked but tested as 18ct £400-500

2265

A 14ct yellow and white gold, ruby and diamond circular reverse cluster ring, featuring a centre round faceted ruby within a halo of eight round brilliant cut diamonds, with an outer border of fourteen round rubies, all in claw settings, centre ruby dimensions approx 3.7 x 1.35mm, weight estimated as 0.15 carats, diamond dimensions each approx 2.1 x 1.34mm, total weight estimated as 0.16 carats, outer ruby dimensions each approx 2.5 x 1.5mm, total weight estimated as 0.98 carats, size Q½, gross weight 4.2g, hallmarked 14ct, Birmingham import 1990, sponsor WH Ltd £300-400

2266

A yellow metal diamond suite of jewellery, comprising an oval hinged bangle with openwork floral detail to the centre, with box clasp and figure-of-eight safety catch, having 36 round brilliant cut diamonds, diameters between approx 1.6 and 1.9mm, total weight estimated as 0.55 carats, bangle width 7.0mm, inner diameter 60 x 50mm, gross weight 25.5g; a pair of yellow metal earrings in a similar openwork floral design, each set with 15 round brilliant cut diamonds, with post and Omega fittings, diamond diameters between approx 1.5 and 1.8mm, total weight estimated as 0.44 carats, earring lengths each 15mm, gross weight 4.8g; and a yellow metal necklet in the same openwork floral design and attached to a ropetwist chain with lobster clasp, comprising a centre section set with 56 round brilliant cut diamonds, diameters between approx 1.3 and 1.6mm, total weight estimated as 0.54 carats, overall length 470mm, chain width 1.25mm £1,600-2,000



Lot 2266

All lots plus buyers premium of 24% including VAT



Lots 2267, 2268, 2269, 2270, 2271, 2272

2267

An 18ct white gold diamond bubble style pendant, featuring ten round brilliant cut diamonds in rubover settings, with an integral oval trace link chain and lobster clasp, diamond dimensions between approx 2.3 x 1.25mm and 3.0 x 1.75mm, total weight estimated as 0.83 carats, assessed mounted collectively colour G to H and clarity VS2 to S11, pendant length 25mm, chain length 450mm, gross weight 8.4g, hallmarked 18ct, London, no date, sponsor LW £400-600

2268

An 18ct white gold Happy Diamond pendant by Chopard, the pendant comprising a 10mm square with a 2.2mm floating round brilliant cut diamond, weight estimated as 0.03 carats, with a round belcher link chain and signed end tag and trigger clasp, chain length 360mm, width 1.7mm, gross weight 12.6g, hallmarked 18ct, Austria, sponsor Chopard £400-600

2269

An 18ct white gold diamond horn pendant by Theo Fennell, featuring 149 fancy yellow brown round brilliant cut diamonds, with 42 round brilliant cut diamonds in the top and bale, all in pavé settings, diamond diameters between approx 1.4 and 1.5mm, total weight estimated as 1.91 carats, pendant length 42mm, gross weight 9.0g, hallmarked 18ct, London 2006, sponsor TF £1,200-1,800

2270

An 18ct white gold sapphire horn pendant by Theo Fennell, comprising 63 round faceted sapphires in pavé settings, sapphire diameters between approx 1.0 and 1.7mm, pendant length 25mm, gross weight 3.7g, hallmarked 18ct, London 2006, sponsor TF £600-800

2271

An 18ct white gold diamond horn pendant by Theo Fennell, featuring 63 round brilliant cut diamonds in pavé settings, diamond diameters between approx 1.3 and 1.6mm, total weight estimated as 0.62 carats, pendant length 25mm, gross weight 3.4g, hallmarked 18ct, London 2005, sponsor TF £600-900

2272

A white metal black diamond horn pendant by Theo Fennell, featuring 63 single cut black diamonds in pavé settings, diamond diameters between approx 1.2 and 1.5mm, total weight estimated as 0.62 carats, pendant length 25mm, gross weight 3.4g, stamped Theo Fennell, London, stamped and tested as 18ct £500-700

2273

A pair of 18ct white gold diamond quiver tassel drop earrings by Theo Fennell, each with three arrow shaped panels pavé set with 33 round brilliant cut diamonds, two of the panels suspended from a 25 and 10mm oval belcher chain, with post and scroll backs, diamond diameters between approx 1.1 and 1.5mm, total weight estimated as 1.62 carats, gross weight 15.9g, hallmarked 18ct, London 2007, sponsor TF £1,500-2,000



Lot 2273

All lots plus buyers premium of 24% including VAT



Lots 2274, 2275, 2276

2274

A yellow metal, diamond and seed pearl fringe necklet, comprising a centre section of three graduated flowers, each with an Old European cut diamond within a border of six seed pearls, with a further fifty-one seed pearls in between, attached to a ropetwist chain with cylinder clasp, Old European cut diamond dimensions between approx 2.15 x 1.45mm and 2.8 x 1.9mm, total weight estimated as 0.17 carats, pearl diameters between approx 1.9 and 2.7mm, necklet length 405mm, width of chain 1.7mm, gross weight 14.2g, not marked but tested as 15ct, in fitted case
£400-500

2275

A white metal Art Deco diamond bracelet, featuring three graduated lozenge shaped sections grain set with 45 round brilliant cut diamonds interspersed with four graduated baguette cut diamonds, all in grain settings, with articulated lozenge shaped links terminating in a box clasp, figure of eight safety catch and broken safety chain, the round brilliant cut diamond dimensions between approx 1.9 x 1.15mm and 4.7 x 2.75mm, total weight estimated as 3.95 carats, baguette cut diamond dimensions between approx 4.3 x 2.0 x 1.4mm and 5.2 x 1.9 x 1.35mm, total weight estimated as 0.52 carats, assessed mounted collectively colour I to J and clarity SI1 to SI2, length 165mm, gross weight 17.9g, not marked but tested as platinum
£2,000-3,000

2276

A late Victorian mourning bracelet, having an oval centrepiece with scrollwork hair detail within a double strand of woven hair, held with engraved yellow metal fittings, oval section dimensions approx 42 x 35mm, overall length 210mm, gross weight 19.4g, metal fittings tested as 24ct
£150-200

2277

A yellow metal oval hinged hollow bangle with floral detail, set with nineteen 1.5 to 4mm seed pearls, with box clasp and safety chain, bangle width 2.6mm, diameter 60 x 50mm, gross weight 9.5g, not marked but tested as 15ct, in fitted case
£300-400

2278

Thomas Tompion and George Graham - a Queen Anne verge pocket watch, movement No. 4650, London circa 1713, the full plate gilt verge movement with four Egyptian pillars, pinned through the front plate and three-arm sprung steel balance, signed and numbered to the back plate, having fine border symmetrical foliate scroll pierced and engraved balance cock with female mask decoration, blue steel hands, signed 'Tho. Tompion, Geo. Graham London' and numbered 4560, now fitted to a late 18th century circular white enamel dial with Roman numerals, the whole housed in an ebony case, full dia. 14.5cm
£4,000-6,000



Lot 2278

All lots plus buyers premium of 24% including VAT

2279

John Brockbank of London - a George III 22ct gold pair cased pocket watch, the outer case with finely chased leaf and flower decoration, the unsigned convex white enamel dial with Roman numerals, the chain driven verge fusee movement on knopped square pillars, having rose cut diamond end stone, pierced balance cock, signed to the back plate 'John Brockbank London No.778', further signed and numbered to the dust cover; case assayed London 1816, gross weight 102g, case dia.48mm
£2,000-2,500

2280

Jessop of London - a George III 18ct gold pair cased doctor's open faced pocket watch, the white enamel dial signed 'Jessop Southampton Street Strand London' and being unusual in having outer sweep seconds hand, with fine outer scale, and subsidiary main dial with Roman and Arabic numerals, push button quarter repeat, the inner case having finely engraved back cover; the outer case being plain, the chain driven verge fusee movement having rose cut diamond end stone, pierced balance cock, signed 'Jessop Southampton Street Strand London' and numbered 2503, the dust cover being further signed and numbered, case assayed London 1787, gross weight 213g, gross dia.64mm
£2,500-4,000

2281

John Perigal of London - a George III gilt metal pair cased pocket watch, circa 1775, having pierced outer case, unsigned convex white enamel dial with Roman and Arabic numerals, pierced inner case, the chain driven verge fusee movement on turned pillars, with rose cut diamond end stone, pierced balance cock, push button, quarter repeat, signed and numbered to the backplate 'J Perigal London No.2774', further signed and numbered to the dust cover; dia.55mm
£1,500-2,000



Lots 2279, 2280, 2281



Lot 2282

2282

Isaac Rogers of London - a George III silver and triple cased pocket watch for the Turkish market, No. 18916, having signed white enamel convex dial with Turkish numerals, the tortoiseshell outer case with pique decoration, plain silver middle case assayed London 1795, chain driven verge fusee movement with pierced balance cock, the backplate signed Isaac Rogers London No.18916, gross dia.74mm
£1,400-1,800

All lots plus buyers premium of 24% including VAT

2283

Reeve & Cotton of London - a George II silver pair cased pocket watch, No. 1119, the unsigned white enamel dial with Roman and Arabic numerals, the plain cases assayed London 1759, chain driven verge fusee movement on knopped square pillars, pierced balance cock, signed to the backplate 'Reeve & Cotton London No.1119', dia.50mm
£400-600

2284

May of London - a George III silver pair cased pocket watch, the outer case with repoussé decoration, plain inner case, signed white enamel dial with Roman and Arabic numerals, chain driven verge fusee movement, on knopped square pillars, pierced balance cock, the backplate signed 'May London 1001', inner case assayed London 1790, outer case with no hallmarks, gross dia.51mm
£500-700

2285

George Charle of London - a George III silver pair cased pocket watch made for the Turkish market, the outer case with bright cut banded decoration and plain back, plain inner case, chain driven verge fusee movement with pierced balance cock, on pierced square cut pillars, the backplate signed 'George Charle London 1033', the cases both assayed London 1804, gross dia.57mm
£400-600

2286

Thomas Earnshaw of London - a fine gold pair cased pocket chronometer, London 1800, having a signed and numbered 403 white enamel dial with Roman numerals, subsidiary seconds dial, gold hands, with heart tipped hour hand, the screwed down movement with gilded full back plate, signed and numbered 403/2625, spring detent escapement plain balanced cock, two arm bi-metallic balance with wedge shaped weights, limiting bars and timing screws, blue steel helical spring, white sapphire end stone, cylindrical pillars, chain fusee, signed and numbered *Thos. Earnshaw Invnt. et Fecit, London No. 403 6th Sort 2625* London plain gold inner and outer cases both hallmarked London 1800 and with maker's mark TC with axe above incuse for Thomas Carpenter, gross weight 94.1g (includes glass), outer case dia. 60mm, the whole housed in associated walnut watch case
£10,000-15,000



Lots 2283, 2284, 2285



Lot 2286

All lots plus buyers premium of 24% including VAT



Lots 2289, 2290, 2291



Lots 2292, 2293, 2294



Lot 2287

2287

John Wall of Sheerness - a George III silver pair cased pocket watch, having a white enamel dial (repaired and lacking minute hand), chain driven verge fusee movement with pierced balance cock (chain detached), signed and further numbered 245 to the backplate, case assayed London 1796, gross dia.55mm; together with an early Victorian silver pair cased pocket watch, having unsigned white enamel dial (hairlines), chain driven verge fusee movement, unsigned but numbered 24113 (non-running), case assayed London 1844, gross dia.56mm (2) **£120-180**

2288

B Musson of Lough - a William IV silver cased gents pair cased pocket watch, having plain outer case, the gilt metal and white enamel motto dial having Roman numerals and bearing motto 'Keep me clean and use me well, and to you the truth will tell', the chain driven verge fusee movement having ring turned pillars, pierced balance cock, the backplate signed 'B Musson Lough 310', cases assayed Birmingham 1834, gross dia.56mm **£300-400**

2289

John Forrest of London - a late Victorian silver cased gents full hunter pocket watch, having signed white enamel dial, subsidiary seconds dial, and fusee lever movement, the backplate signed 'Chronometer maker to the Admiralty, London', case assayed Chester 1900, dia.60mm **£100-150**

2290

John Grey of London - a George IV silver pair cased gents full hunter pocket watch, having engine turned case, unsigned white enamel dial with subsidiary seconds dial, chain driven fusee movement, the backplate signed 'John Grey Leadenhall Street London' and numbered 2613, case assayed London 1825, dia.55mm **£150-250**

2291

Charles Maitland of London - an early 19th century gents silver cased open faced pocket watch, having unsigned white enamel dial, subsidiary seconds dial, chain driven verge fusee movement, signed to the backplate 'Charles Maitland London 5529', case assayed London 1818, dia.54mm **£120-180**

2292

McCabe of Royal Exchange London - a silver cased full hunter pocket watch, having fine engine turned case, signed and numbered dial 06706, keywind chain driven fusee movement with two pin lever escapement, case assayed London 1870, dia.45mm **£250-350**

2293

A late Victorian gent's silver cased pocket chronograph, having unsigned but numbered white enamel dial, Roman numerals with fine Arabic outer scale, keywind unsigned movement, numbered to the backplate 40033, dia.54mm **£150-250**

2294

Dent of London - a late Victorian silver cased gents open faced watch, having signed white enamel dial, subsidiary seconds dial, keywind lever movement, the backplate signed 'Dent 61 Strand & 34 Royal Exchange London 39423', case assayed London 1878, dia.44mm **£150-200**



Lot 2288

All lots plus buyers premium of 24% including VAT

2295

Army & Navy London - an 18ct gold cased gents full hunter perpetual calendar pocket watch, the case having engraved armorial to hinged front cover and monogram to back cover; plain inner back cover; the unsigned white enamel main dial with Roman numerals and having four subsidiary dials being calendar; rolling moon, day of the week, and four-year-going leap year dial, the moon dial with sweep seconds, keyless movement, the backplate signed 'A&N 117 Victoria Street London SW' and movement number 1425, the covers all further numbered 1425 and with London 18ct gold assays, gross weight 170g, dia.53mm
£8,000-12,000



Lot 2295

2296

A gents 9ct gold cased open faced pocket watch, having unsigned white enamel dial with subsidiary seconds dial, keyless 15-jewel movement, the Dennison case with gold inner back cover; 83.5g, dia.50mm
£300-400

2297

Vale & Richardson of Bury St Edmunds - an 18ct gold cased open faced pocket watch, having unsigned engine turned dial with Roman numerals, finely engraved back cover; keywind movement, signed to the backplate 'Vale & Richardson Bury St Edmunds 34374', 54g, dia.40mm
£400-600

2298

W J King of (Kings) Lynn - a lady's 18ct gold cased open faced pocket watch, having finely engraved and engine turned back cover; the three-colour gold dial with Roman numerals, the watch with keywind lever movement and signed to the backplate, 43g, dia.37mm; together with a 9ct gold belcher link watch chain (cut), 5.3g
£350-500



Lots 2296 2297



Lot 2298

All lots plus buyers premium of 24% including VAT



Lots 2299, 2300, 2301, 2302

2299

JW Benson of London - an 18ct gold cased gents open faced pocket watch, having a signed silvered dial, subsidiary seconds dial, the back cover monogrammed and with inscribed presentation inscription to inside, keyless movement, 53.1g, dia.57mm, sold with a two-colour 9ct gold watch chain weighing 7.2g, 38cm (2)
£400-500

2300

A 9ct yellow gold Rolex open face manual wind pocket watch, having a round white Arabic dial and subsidiary dial at 6 o'clock, case diameter 48mm, fifteen jewel movement, number 5201743, inner case hallmarked 9ct, Birmingham 1934, sponsor ALD, number 29172, gross weight 76.1g
£400-600

2301

A gents 9ct gold cased pocket watch, having an engine turned unsigned dial with lozenge detail, subsidiary seconds dial, raised Arabic numerals, engine turned hinged back cover, unsigned keyless movement, 52g, dia.45mm
£250-350

2302

Rotherhams of London - a gents 18ct gold cased half hunter pocket watch, having unsigned dial with subsidiary seconds dial, the case with monogrammed back cover; gold inner cover; keyless movement, the backplate signed 'Rotherhams London' and numbered 371269, 99g, dia.48mm, with bloodstone set silver swivel fob pendant
£800-1,200

2303

A nickel cased Doxa 'Goliath' anti-magnetic open face keyless pocket watch, having round white dial with blue enamel Roman numerals and subsidiary dial at 6 o'clock, with two gilt lions and the back engraved with a steam train, inner case engraved 'Medaille D'Or Milan 1906', Hors concours Liege 1905', stamped 42958 X 28, case diameter 70mm, gross weight 193.1g.
Note: Goliath is the name given to those pocket watches which are more than 65mm in diameter. This particular pocket watch won its founder George Ducommun the gold medal at the World's Fair in Milan for its anti-magnetic properties.
£500-700

2304

A vintage gents 9ct gold cased Rolex wristwatch, circa 1960, having a signed silvered dial with quarter Arabic numerals, manual wind movement, the back cover with presentation inscription, case dia.31mm
£500-700



Lot 2303



Lot 2304

All lots plus buyers premium of 24% including VAT



Lot 2305

2305

A gents steel Rolex Oyster Perpetual datejust superlative chronometer, having a signed silvered dial with Arabic numerals, date aperture, automatic movement, on original Rolex bracelet, circa 2001, numbered P779535, with box, outer box, one spare bracelet link, and all papers, case dia.35mm
£2,000-3,000

2306

A gents bi-metal Rolex Oyster Perpetual datejust superlative chronometer, having signed champagne dial with baton markers, gilded bezel and crown, date aperture, automatic movement, numbered 5884261, circa 1982, bi-metal on steel bracelet, with box, papers, and Rolex leather passport wallet
£1,200-1,800

2307

A lady's Rolex Oyster Perpetual bi-metal datejust superlative chronometer, having signed champagne dial with diamond set markers, date aperture, automatic movement, bi-metal jubilee bracelet, numbered E429816, circa 1991, with box, outer box and papers, case dia.26mm
£2,000-2,500



Lot 2308

2308

A lady's bi-metal Tudor Princess Oyster date rotor self-winding wristwatch, having signed champagne dial with Roman numerals, date aperture, automatic movement, and a jubilee bi-metal bracelet, circa 1990, case dia.22mm, model No.92313, serial No.B524096
£400-500

2309

A gents Jaeger LeCoultre 18ct gold Memovox Speedbeat automatic alarm wristwatch, circa 1970, having a signed champagne dial with baton markers, date aperture, and twin crowns for time and alarm hand, cover numbered 875.211445928, on replacement crocodile skin strap, case dia.38mm
£2,000-3,000



Lot 2306



Lot 2307



Lot 2309

All lots plus buyers premium of 24% including VAT



Lot 2310



Lot 2312



Lot 2313



Lot 2314



Lot 2311

2310

A Patek Philippe 18ct gold 'Golden Ellipse' gent's wristwatch, having a signed blue dial, manual wind movement, and original gold meshlink bracelet, the 18-jewel lever movement numbered I323626, 76g, dial dia.27mm, sold with Patek Philippe repair invoice dated June 12 and costing £1120 (including VAT)
£2,500-4,000

2311

A lady's Chopard Happy Sport stainless steel bracelet watch, with signed mother of pearl dial, five floating diamonds, further diamond set bezel, quartz movement, blue cabochon sapphire set crown and lugs, original Chopard bracelet, circa 2005, back cover numbered 8895-23/11 858134 8892, case w.33mm, with original box and outer box
£2,000-2,500

2312

A lady's Chopard Happy Sport stainless steel bracelet watch, having signed mother of pearl dial with five floating diamonds, quartz movement, blue cabochon sapphire set lugs and crown, on original bracelet, circa 2005, back cover numbered 27/8893-23 879693 8892, case w.23mm, with box and outer box
£900-1,100

2313

A lady's Louis Vuitton Tambour stainless steel chronograph watch, having signed brown metallic dial with triple subsidiary dials and quartz movement, screw-down back cover, numbered RH7320 Q1321, circa 2006, case dia.32mm, with original crocodile skin bracelet, box and papers
£400-600

2314

A Cartier crocodile skin watch strap in brown, signed and numbered KD1M9N87; together with three other Cartier crocodile skin lady's watch straps, each signed and numbered, being black, blue and green (4)
£100-200

All lots plus buyers premium of 24% including VAT

2315

A gents Porsche design black-coated stainless steel chronograph, having signed main dial, triple subsidiary dials, date aperture at 4 o'clock, quartz movement, screw-down back cover, numbered WAP0700850G, case dia.42mm, on rubber bracelet, with box and papers, appears unworn
£200-300



Lot 2315

2316

A lady's steel and black ceramic Tag Heuer Formula One quartz wristwatch, having a round black dial set with ten diamonds at hour markers, and a pavé set diamond circle at the centre with 55 single cut diamonds, an outer ceramic bezel with 84 diamonds, and an integral steel and ceramic barlink bracelet with concealed clasp, case dia. 36mm, case reference WAH1219/TPQ5242, overall length 190mm, gross weight 99.7g
£500-700



Lots 2316, 2317

2317

A lady's steel Christian Dior quartz wristwatch, having rectangular mother of pearl dial and bezel set with 10 round brilliant cut diamonds in scatter design, fitted to an integral stirrup link bracelet with clip over clasp, diamond diameters between approx 1.0 and 1.5mm, total weight estimated as 0.08 carats, case dimensions 26 x 20mm, overall length 190mm, case references D78-1090/D26639, gross weight 52.1g
£400-600

2318

A ladies 18ct three-colour gold, ruby and diamond cocktail manual wind wristwatch, having a round cream baton dial within an integral bark finish bracelet with peg style clasp, the hinged textured openwork cover set with 10 marquise shaped rubies and seven round brilliant and single cut diamonds, ruby dimensions each approx 4.7 x 2.7 x 2.1mm, total weight estimated as 2.30 carats, diamond dimensions between approx 1.2 and 2.0 x 1.4mm, total weight estimated as 0.16 carats, length 173mm, bracelet width 12 to 17mm, case diameter 15mm, gross weight 54.3g, partial hallmark for 18ct, sponsor DS&S
£2,000-2,500



Lot 2318



Lot 2319

2319

A lady's Tag Heuer Link steel bracelet watch, having a signed silvered dial with diamond set markers, date aperture, quartz movement, on original bracelet, case dia.27mm, model No.WJFI317, serial number EBH3669, circa 2015, with box and papers
£500-700

All lots plus buyers premium of 24% including VAT

OBJET D'ART

2323

A Victorian lacquered brass and pink opaline glass pedestal oil lamp, having cranberry glass frilly and spiral fluted shade, the font with floral enamel decoration to a fluted column, h.55cm
£200-300



Lot 2323

2324

A 19th century Swiss rosewood cased music box, the 6" cylinder playing eight airs and striking on three bells, with stop/start and change/repeat function, the case with satinwood stringing and marquetry floral single spray to the lid, w.41 cm
£300-500



Lot 2324

2325

A 19th century Lachenal & Co rosewood 48 button concertina, No.46985, with black leather bellows, all housed in a mahogany case
£150-250

2326

A late 19th century kaleidoscope on stand, being leather bound and lacquered brass, the cylinder with brass ships wheel moveable fitting, supported on a turned walnut base, the circular chamber box containing multi-coloured glass segments, 26cm
£100-150

2327

An Antoine Claudet tinted stereoscopic portrait daguerreotype of a family group, together with a beechwood stereoscopic slide viewer (2)

Antoine Claudet (1797-1867) was a French photographer who studied under pioneer Louis Daguerre, and was one of the first people to practice daguerreotype portraiture in England after opening a London studio in 1841. By adapting the sensitizing process he could produce images quickly and was frequented by many famous Victorians. Claudet is also credited with the idea of using painted backdrops for his shots.
£300-500



Lot 2326



Lot 2325

2328

An 18th century felt and wool work panel depicting a robin upon a flowering branch, further decorated with leaf and flower sprays, housed in a gilt frame and further glazed, the panel 39 x 48cm
£200-300



Lot 2327



Lot 2328

All lots plus buyers premium of 24% including VAT



Lot 2329



Lot 2333

2329
A William IV finely worked needlework verse and picture sampler, by Eleanor Devonshire, aged 9 years, dated 1835, 44 x 33cm, housed in a modern glazed frame
£150-250

2333
A late 19th century bronzed metal relief plaque depicting a Roman battle scene, unsigned, 21 x 62cm, the whole in probably original moulded blond oak frame
£200-300



Lot 2330

2330
A Victorian silkwork panel depicting a maiden with flowers at Shakespeare's tomb, mounted as an oval, 30 x 23cm, all housed in original rosewood frame, 44 x 38cm
£80-120

2334
Pierre-Jules Cavalier (French 1814-1894) - Penelope, patinated bronzed model in the neo-classical taste, the queen portrayed in loose drapery and sleeping in a klismos, stamped in the maquette to the reverse J Cavalier and Reduction Mechanique, h.24cm
£400-600

2331
A pair of circa 1900 Native American beaded hide moccasins, geometrically decorated in principally green and white, 26cm
£100-150

2332
A pair of circa 1900 Native American beaded hide leggings / gators, each with banded decoration to the lower half in blue, white, red and yellow, having tie tops, 46cm
£150-250



Lot 2332



Lot 2331



Lot 2334

All lots plus buyers premium of 24% including VAT

2335

A graduated set of three late 19th century figures of the seated Mercury, after the antique, each nude figure typically modelled seated on a rocky outcrop, the largest h.16cm
£120-180

2336

Paul Dubois (1829-1905) - a large bronze portrait bust of the scientist Louis Pasteur, naturalistically modelled, mid-brown patina, raised on integral plain circular socle with revolving action, etched signature *PDubois* to rear of neck, h.53cm
£500-700



Lot 2336

2337

Gustinus Ambrosi (1893-1975) - a large bronze portrait bust of a gentleman, naturalistically modelled, dark-brown patina, signed *Ambrosi* and dated *1917* to lower part of one side of neck, raised on an ebonised socle with rotating action, overall h.53cm
£150-250

2338

A large pair of late 19th century French gilt bronze and white marble candelabra, each with foliate cast three-branch arms, with swag decorated nozzles, the supports of half-reeded lobed urn form, raised on mask cast swag caryatid and footed supports, to further circular stepped marble bases on toupie feet, h.60cm
£700-1,000

2339

A mahogany apprentice piece type miniature chest, in the Regency style, having two short and three long graduated drawers, on splayed bracket feet, 20th century, w.25cm
£120-180



Lot 2337



Lot 2335



Lot 2339



Lot 2338

All lots plus buyers premium of 24% including VAT



Lots 2340, 2341



Lot 2343



Lot 2346



Lot 2344



Lot 2345

2340
A George III satinwood, crossbanded and inlaid tea caddy, the hinge cover with conch shell marquetry inlay, enclosing twin lidded interior with later caddy spoon, with *Mundy & Walker Tea-Dealers broadsheet 'No 73'*, with key, 19 x 13 x 13cm
£200-300

2341
A large Regency yew wood tea caddy, of sarcophagus form, the hinge cover enclosing twin lidded removable caddies, with central glass mixing bowl (bowl with damage), raised on ben feet and with opposing cast metal carry handles, 31.5 x 17.5 x 16cm
£150-250

2342
A Victorian papier-mâché and mother of pearl inlaid tea caddy, of sarcophagus form, containing two Japanese porcelain canisters enamel decorated in the Imari palette, w.26cm
£70-100

2343
A Medieval French breviary leaf, the Latin text in red, black and blue ink on vellum, double-sided framed and glazed, page dimensions approx 18 x 13cm
£40-60



Lot 2342

2344
L Semler - a 19th century ivory penwork panel, depicting a 17th century continental scene of figures before a castle, signed lower left, 12 x 9.5cm
£150-250

2345
An autographed Canadian Pacific Line SS Monlaurien menu, dated 1st February 1928, signed by the returning 1924-25 New Zealand All Blacks
£400-500

2346
A George III steel footman, of good size, having solid top over horseshoe shaped undertier; all raised on pad feet, h.44cm, w.36cm
£80-120

All lots plus buyers premium of 24% including VAT

2347

An 18th century bronze pestle and mortar, the pestle with ring turned finial, the mortar of bell shape, dia. 17.5cm
£100-150



Lot 2347

2348

An early 20th century French bronze, rouge marble and gilt brass table lamp, the stepped base mounted with recumbent figure of a maiden with basket of flowers, raised on ball feet, h.55cm (including fittings)
£200-300



Lot 2348

2349

After Nicolay Ivanovich Lieberich - a bronze model of a recumbent hound, signed H. Либериxъ to the collar; raised on variegated green marble rectangular plinth, bronze length 38cm
£200-300

2350

A mid-Victorian coromandel and brass bound lady's fitted toilet box, the interior having an array of silver topped boxes, jars and bottles, sewing tools and accoutrements, the silver being engine turned, maker John Harris, London 1866, the whole with secret base drawer; w.32.5cm
£200-300



Lot 2350

2351

A pair of continental carved ivory table ornaments of standing female figures wearing bonnets, flowing robes and holding daggers, on white metal and cabochon jewelled rock crystal bases, probably Hanau (Germany mid-late 19th century), h.26cm
£600-900



Lot 2351



Lot 2349

All lots plus buyers premium of 24% including VAT

ASIAN WORKS OF ART



Lot 2352

2352

A Victorian Art Union of London bronzed metal tazza, the centre cast in relief with an allegorical scene within a cherub mask and scroll foliage border, with London Art Union seal verso, dia.28cm

£60-90

2353

Hans Müller (Austrian 1873-1937) - bronze bust of Shakespeare, on a rouge marble socle and plinth, stamped Austria verso and signed H Müller to the shoulder, h.29cm

£120-180

2354

A late 19th century gilt bronze novelty table cigar lighter, the upper section modelled as a bust of a Moorish slave having thumbpiece to the head, numbered 553, with removable wick to the mouth, the whole raised on cast eagle claw foot, h.24cm

£120-180



Lots 2353, 2254



Lot 2358

2358

A 19th century Burmese 'silver' bowl, the whole decorated in the round with figures, elephants, wild animals, trees and buildings, within chased borders, the base decorated with a peacock, 959g, dia.25cm

£300-400

2359

A pair of Chinese gilt bronze vases, the waisted necks each with entwined dragon, the bases with birds amidst flowers and foliage, seven character mark verso, h.25cm

£100-200



Lot 2359

2360

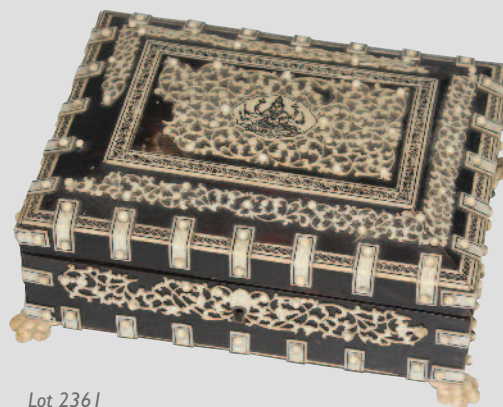
A cased set of eight Japanese cloisonné enamel vases, 20th century, each showing a different process of the making from the bare bronze metal vase to the finished example, each h.15cm, the whole in a fitted box

£80-120

2361

A circa 1900 Anglo-Indian tortoiseshell veneered and ivory mounted table box, the cover with central penwork seated Buddha within pierced foliate surround (some losses to ivory), enclosing cedar lined interior; 217 x 6.5 x 13cm

£100-150



Lot 2361



Lot 2360

All lots plus buyers premium of 24% including VAT



Lot 2362

2362

A Chinese export blue and white vase, the tapered body with twin applied elephant head handles, the whole decorated with longevity motifs of peaches and bats intertwined with a Buddhist swastika symbol, on a ground of open Indian lotus heads, with Hu Qianlong seal mark verso, h.37cm
£400-600



Lot 2364

2364

A pair of 18th century Chinese famille verte vases, of slender ovoid form, enamel decorated with flowering bamboo (lacking covers), h.23cm
£500-800

2365

A Chinese porcelain yellow ground bowl, decorated with nine boys amidst fruiting tree to a honeycomb ground, four character mark verso, 20th century, dia.20cm
£100-200

2366

A Chinese porcelain yellow ground bowl, enamel decorated with flowering branches, four character mark verso, dia.16.5cm
£80-120



Lot 2363

2363

A pair of circa 1900 Chinese Canton vases, each of square section and enamel decorated with reserves of peacocks, exotic birds, and flowers within a blue ground, h.42cm
£200-300



Lots 2365, 2366

All lots plus buyers premium of 24% including VAT

2367

A Chinese porcelain yellow ground 'dragon' bowl, underglaze blue decorated with five-claw dragons amidst clouds, six character mark verso, dia.20.5cm
£100-200



Lot 2367

2368

A Chinese famille rose porcelain double gourd vase, decorated in bright enamels with peacocks and exotic birds amidst floral sprays and water-lilies, with six character mark verso, h.39cm
£200-300



Lot 2368

2369

A pair of Chinese famille rose cylindrical vases, each decorated in bright enamels with ceremonial figure and dragon scenes, heightened in gilt, h.28cm
£800-1,200

2370

A Chinese famille rose hexagonal vase, enamel decorated with figure landscape scenes, all heightened in gilt, each panel with pierced 'cloud' section, red seal mark verso, h.29cm
£400-600

2371

A pair of Chinese famille rose bottle vases, each enamel decorated with flowering bamboo and peonies, blue seal mark verso, h.23.5cm
£300-400

2372

A Chinese export celadon ground baluster vase, having raised blue and white figure and cloud decoration, h.38cm
£400-600

2373

A Chinese export blue and white vase, of tapering square section, decorated with figures upon mythical animals within a landscape, h.40cm
£200-300



Lots 2372, 2373, 2374



Lots 2369, 2370, 2371

2374

A Chinese export blue and white Gu vase, decorated with opposing reserves of objects amidst cracked ice and prunus blossom ground, four character mark verso, h.36.5cm
£300-400

All lots plus buyers premium of 24% including VAT

PICTURES & PRINTS



Lots 2375, 2376

2375

A pair of Chinese sang-de-beuf bottle vases, each being heavily potted, h.18cm
£200-300

2376

A Chinese crackle glazed censor, of triform, raised on moulded feet, w.10.5cm
£150-250

2377

A Chinese porcelain pink ground bowl, enamel decorated with flowers and foliage, later Qianlong mark verso, dia.15cm
£300-400

2378

A pair of Chinese porcelain powder-blue ground 'medallion' bowls, each enamel decorated with reserves brightly decorated with flowers and foliage, later Qianlong marks verso, dia.15cm
£400-600



Lots 2377, 2378



Lot 2382

2382

Edouard Detaille (1848-1912) - Marching flute band, watercolour and gouache, signed "Fac Simile D'Apres Edouard Detaille" and dated 1880 lower left, 43 x 56cm
£400-600



Lot 2383

2383

Edouard Detaille (1848-1912) - The Queen's Guards, watercolour and gouache, signed "Fac Simile D'Apres Edouard Detaille" and dated 1881 (?) lower left, 47 x 68cm
£400-600

2384

Charles Edward Dixon (1872-1934) - Steamliner setting sail with attendant tug-boats, watercolour with body colour; signed and dated '96 lower left, 31.5 x 53cm
£400-600



Lot 2384

All lots plus buyers premium of 24% including VAT



Lot 2386



Lot 2387



Lot 2388



Lot 2389



Lot 2385

2385
John Millington (1891-1948) - The Thames with steam tugs and St Paul's beyond, watercolour with traces of white, signed lower right, 31 x 46cm
£80-120

2386
Hubert James Medlycott (1841-1920) - St Paul's Cathedral from the Southbank, watercolour, signed and dated 1894 lower left, 34.5 x 51.5cm
£120-180

2387
Charles Rowbotham (1826-1904) - Pair; Italian coastal scenes, watercolour and gouache on buff paper; each signed and dated 1865 lower left and right, numbered 679 and 68*, 19.5 x 48cm
£300-500

2388
Attributed to Carl Auguste Sommer (1829-1894) - A lone fisherman on a rocky stream within a landscape, oil on canvas, signed lower right, 22 x 31cm
£200-300

2389
Attributed to Alfred Stannard (1806-1889) - Study of an old barn, oil on canvas, 30 x 44cm
£120-180

2390
George Bryant Campion (1796-1870) - The Young Keeper, watercolour, signed lower left, 41 x 31cm
Provenance: ex-Malcolm Innes Gallery, London & Edinburgh
£150-200

2391
Early 19th century English school - Travellers with white pony in a landscape, oil on canvas with old re-lining, 25 x 30cm
£60-90



Lot 2390



Lot 2391

All lots plus buyers premium of 24% including VAT

The following 14 lots comprise a single-owner collection of late 18th and early 19th satirical prints and caricatures by renowned etchers including Thomas Rowlandson, James Gillray, the Cruikshank brothers, as well as local artist Henry Bunbury. This was a period of political upheaval both at home and abroad with the American War of Independence, the French Revolution, and the Regency Crises resulting from George III's mental health issues. This turbulent era happily coincided with an expanding print industry, which brought illustrations of contemporary issues to an increasingly educated audience. Unsurprisingly, the art of satirical caricature flourished in this atmosphere as a kind of Spitting Image for the times, and this collection gives a very good snapshot of how the public may have viewed their so-called leaders.



Lot 2392



Lot 2393



Lot 2394



Lot 2395

2392

Thomas Rowlandson (1757-1827) after Henry William Bunbury (1750-1811) - *Patience in a Punt*, hand-coloured satirical etching and stipple, signed and titled, visible image dimensions 24.5 x 37cm
£100-150

2393

Samuel William Fores (publisher) (1761-1838) - *Northern Bears taught to Dance*, from the series 'Folios of Caracatures lent out for the Evening' published 1801, depicting Lord Nelson, Sir Hyde Parker and Jack Tar whipping bears representing Russia, Denmark and Sweden, hand-coloured satirical etching, visible dimensions 25 x 33cm
£100-150

2394

James Gillray (1757-1815) - *Lordly Elevation*, hand-coloured satirical etching, published 1802 by Hannah Humphrey, caricature depicting the vain Sholto Henry Maclellan upon his elevation to being 9th Lord Kirkcudbright, visible dimensions 26.5 x 21 cm
£250-400

2395

Samuel William Fores (publisher) (1761-1838) - *A Concise Explanation of the Convention Bills*, from the series 'Folios of Caracatures lent out for the Evening' published 1795, hand-coloured satirical etching, visible dimensions 33 x 23.5cm
£80-120

2397

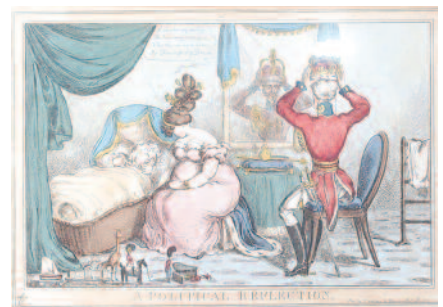
William Heath (1794 – 1840) - *A Political Reflection*, hand-coloured satirical etching, published circa 1828 by Thomas McLean (1788-1875), depicting George IV as the 'Great Babe' asleep in his cradle being rocked by his mistress Lady Conyngham, while the Duke of Wellington, seated before a pier-glass, places the crown upon his own head, visible dimensions 24.5 x 35cm
£80-120



Lot 2396

2396

Attributed to John Phillips (act. 1825-1831) - *A Political Menagerie. Rare Favourite Birds*, hand-coloured satirical etching, published 1829 by George Humphrey (act. 1783-1831), depicting George IV surrounded by animals, each with the head of a different public figure including the Duke of Wellington and Sir Robert Peel, visible dimensions 23 x 33cm
£80-120

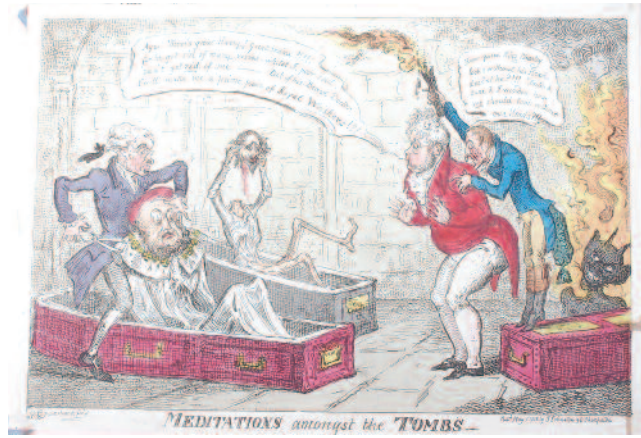


Lot 2397

All lots plus buyers premium of 24% including VAT



Lot 2398



Lot 2400

2398

Six unframed 19th century hand-coloured etching satirical caricatures; four by William Heath (1794 – 1840) - **Political Conveyancer**, depicting George IV and his bandaged gouty leg being supported by his mistress Lady Conyngham, while Sir Robert Peel uses the Duke of Wellington as his mouthpiece; **The slap up swell wot drives when hever he likes**, depicting George IV; **The guard wot looks after the sovereign**, depicting Lady Conyngham standing holding a coaching horn and wearing a coachman's robe; and **Does the Harp of Rosa Slumber**, all published circa 1828/29 by Thomas McLean (1788-1875); together with two by John Phillips (act.1825-1840) (pseudonym A Sharpshooter) - **The Nurse, Child, and Plaything**, hand-coloured etching, published 1829 by John Field (act.1790-1840), depicting the Duke of Wellington as a nurse holding George IV and Lady Conyngham as infants; and **The stroke oar to the Royal George**, depicting Lady Conyngham as an oarsman, published 1829 by S Gans (act 1820-1831). Each sheet approx 44 x 30cm (6)
£200-300

2399

James Gillray (1756-1815) - Apotheosis of the Corsican Phoenix, monochrome engraving, published 1808 by Hannah Humphrey, depicting Napoleon as a phoenix in his flaming nest as the globe atop the Pyrenean mountains, a dove of peace emerges from the smoke, Napoleon's Spanish invasion and Peninsular War being prophetically viewed as his eventual downfall, approx sheet dimensions 36.5 x 27.5cm ; together with **William Heath (1794 – 1840)- What seemed a Head. The image of a Kingly Crown had on**, monochrome engraving, published by Thomas McLean, depicting the Duke of Wellington wearing the royal crown and within the initials AR (Arthur Royal), approx dimensions 23.5 x 16cm (2)
£80-120

2400

Five unframed 19th century satirical prints, comprising **George Cruikshank (1792-1878) - Meditations amongst the Tombs**, hand-coloured etching, published 1813 by John Johnston, depicting the true story of the Prince Regent opening the tombs of Henry VIII and Charles I; **Charles Williams (act 1797-1830) - The Silver Oar versus The White Wand or The Helmsman**, hand-coloured etching, published 1828 by John Johnston, depicting the Duke of Wellington (then Prime Minister) presenting a list of expenses to King George IV and Prince William, Duke of Clarence; **William Heath (1794–1840) - The Two Happiest Men Alive**, hand-coloured engraving, published 1827 by Thomas McLean, depicting the Duke of Wellington and King George IV; **William Heath (1794–1840) - A Quartette in Character**, hand-coloured engraving, published 1829 by Thomas McLean, depicting King George IV, the Duke of Wellington, Lady Conyngham, and Robert Peel standing posed as four stagecoach characters; and **William Heath (1794–1840) - Recruiting Party 'Nows Your Time My Lads—Whigs & Tories—Christians. Jews & Turks—no distinction made.'**, hand-coloured engraving, published 1829 by Thomas McLean, depicting Wellington as a recruiting officer saluting George IV with Lieutenant-Colonel Scarlett, Robert Peel and Lady Conyngham. Each image dimensions 33 x 24cm (5)
£150-200



Lot 2399

2401

Attributed to Theodore Lane (act. 1800-1828) - The Modern Genius of History at her Toilet, hand-coloured engraving, depicting Queen Caroline of Brunswick and her lover Bartolomeo Bergami dressing for a ball, 26.5 x 21 cm; and **The whole Truth, or John Bull with his eyes opened**, by the same artist, hand-coloured engraving, depicting Caroline of Brunswick as a mad Lady Macbeth before a horrified John Bull, both published 1821 by George Humphrey, 28 x 21 cm (2)
£80-120



Lot 2401

All lots plus buyers premium of 24% including VAT



Lot 2402

2404

James Gillray (1757-1815) - **Delicious Weather**, hand-coloured etching, published 1808 by Hannah Humphrey, caricature depicting an elderly man on a garden bench, visible dimension 23.5 x 20cm; together with **Charles Williams (act. 1796-1830) - The Rival Queans, or a Scene in the Beggars Opera**, hand-coloured etching, published 1809 by Elizabeth Walker; 23 x 33.5cm (2)
£100-150



Lot 2404



Lot 2403

2402

James Gillray (1757-1815) - **Georgy in the Coal-Hole**, hand-coloured etching, published 1808 by Hannah Humphrey, caricature depicting George Hangar, 4th Baron Coleraine, the disreputable friend of George IV who became a coal merchant upon his release from debtor's prison, mounted but not framed, image dimensions 26 x 21.5cm
£80-120

2403

Attributed to James Gillray (1757-1815) - **A Decent Story**, hand-coloured etching, published 1795 by Hannah Humphrey, caricature depicting a drinking group absorbed in hearing a tale, visible dimensions 21.5 x 28cm
£100-150



Lot 2405

2405

Isaac Robert Cruikshank (1789-1856) - **A dandy shoe maker in a fright, or the effects of tight lacing**, hand-coloured etching (unglazed), published 1818 by Thomas Tegg, visible dimensions 24 x 32.5cm; together with **John Doyle (1797-1868) (pseudonym HB) - A Great Economist**, hand-coloured lithograph, published 1830 by Thomas McLean, depicting George IV reading a newspaper, satirising his extravagant expenditure, visible dimensions 27 x 31cm (2)
£80-120



Lot 2406

2406

Godfrey Sayers (b.1942) - **Low-tide on the estuary**, watercolour; signed lower left, 36 x 48cm
£100-140

2407

Jospeh J Jenkins (1811-1885) - **By the river Blyth, coast of Suffolk**, watercolour; signed and dated lower right 1881, 22 x 49cm
£300-500



Lot 2407

All lots plus buyers premium of 24% including VAT



Lot 2408

2408
William Collingwood-Smith (1819-1903) - The beach at Tor Cross, South Devon, watercolour, signed lower right, 32 x 56cm
£200-300



Lot 2412

2409
Attributed to Augustus John - Portrait of his first wife Ida Nettleship, circa 1905, pencil drawing, signed lower right, 27 x 24cm
£120-180



Lot 2409



Lot 2411

2410
Circle of Alfred Hayward (1856-1939) - Still life with flowers in two vases, oil on canvas, unsigned, 40 x 30cm
£100-150

2411
Henry Bright (1810-1873) - Fisherman at low-tide, pastel and chalk, 12 x 16.5cm
£80-120



Lot 2410



Lot 2413

2412
Charles John de Lacy (1885-1918) - The Pool, sail and steam boats on The Thames, watercolour with traces of white, signed lower left, 25 x 35.5cm
£100-150

2413
Henry George Todd (1846-1898) - Still life with fruit, blue and white vase and bowl on a carved oak ledge, oil on canvas, signed and dated 1879 lower right, 35 x 30cm
£300-500

All lots plus buyers premium of 24% including VAT



Lot 2414



Lot 2417

2414

In the manner of Jan van Huysum (1682-1749) - Pair; Still life with flowers in a glass bowl on a marble ledge, oil on panel, unknown signature 'V Dewey or V Demmey' lower right, 40 x 30cm
£300-500

2417

Theodorus Van Oorschot (Dutch 1910-1989) - Still life with cabbage-roses, oil on canvas, signed lower right, 60 x 90cm
£150-200

2418

Clive Madgwick (1934-2005) - Cley Windmill from across the marshes, oil on canvas, signed lower right, 50 x 75cm
£800-1,200

2415

Henry Farmer FRSA - Still life with flowers in a glass bowl, oil on panel, signed lower centre, framed as an oval, 58 x 43cm
£80-120

2416

A Victorian reverse painting on glass - still life with Summer Flowers in a pedestal vase upon a ledge, oil on canvas, indistinctly signed lower right, framed as an oval, 45 x 36cm
£80-120



Lot 2415



Lot 2416



Lot 2419

2419

After Jodocus Hondius - 'The Countie and Cite of Lyncolne described with the Armes of Them that have bene Earles Thereof since the Conquest', hand-coloured double-sided map bearing town plan for Lincoln and coats of arms, the description of Lincolnshire with table and English text verso, published by Thomas Bassett of Fleet St and Richard Chiswell of St Paul's Churchyard, circa 1610, the full sheet approx 42 x 55cm; and Johannes Blaeu - engraved County Map of Northumbria, later hand-coloured, with coats of arms, 41 x 50cm (2)
£100-150



Lot 2418

All lots plus buyers premium of 24% including VAT



Lot 2420



Lot 2425

2420

Johannes Blaeu - Nortfolcia, Norfolk, Amsterdam, 1648, engraved county map with later hand-colouring, showing coats of arms with Latin text verso, 38 x 50cm
£150-250

2421

Valk & Schenk - Amsterdam, Nortfolcia vernacule Norfolk, engraved and later hand-coloured county map of Norfolk, circa 1700, unframed but mounted, 38 x 48cm
£100-150

2422

Christopher Saxton - Kip - Norfolciae Comitatus (Norfolk), engraved later hand-coloured county map, circa 1610, 27 x 38.5cm
£80-120

2423

Emmanuel Bowen - An Accurate map of the County of Suffolk divided into its hundreds, engraved and later hand-coloured, circa 1747, unframed but mounted, 40.5 x 50cm
£70-100

2424

'The County of Suffolk reduced from the large map in six sheets, surveyed by Joseph Hodkinson, and planned from a scale of half an inch to one mile', published London, January 1st 1787, printed for William Faden, Geographer to the King, Charing Cross, folding map on linen, hand-coloured outlines to the hundreds, 58 x 77cm
£80-120

2425

Thomas Warren - 18th century survey map of the Borough of St Edmundsbury in the County of Suffolk, having town plan of Bury St Edmunds and topographical engravings of the principal buildings and coats of arms of important local families, published according to Act of Parliament 1776, monochrome engraving, 70 x 96cm, later framed
£200-300



Lot 2421



Lot 2423



Lot 2422



Lot 2424

All lots plus buyers premium of 24% including VAT

2426

Christopher Saxton-Kip - *Essexia Comitatus* (Essex), engraved and later hand-coloured county map, circa 1607, unframed but mounted, 29 x 37cm
£80-120



Lot 2427



Lot 2428

2427

Mercator (Gerard & Hondius Jodocus) - County map of South-East England, engraved and later hand-coloured, circa 1628, unframed but mounted, 37 x 47cm
£80-120



Lot 2426

2428

After William Hogarth - 'A Presentation of the March of the Guards towards Scotland in the year 1745 to His Majesty The King of Prussia, and encourager of Arts & Sciences!', This plate is most dedicated', monochrome engraving by Luke Sullivan, 43 x 55cm
£40-60



Lot 2431

2429

José Roig (1898-1968) - *A Pleno Sol, Pampa de Pocho* (Cordoba), oil on canvas board, signed lower right, 44 x 54cm
£100-150



Lot 2429

2430

No lot

2431

David Birch (b.1945) - *Extensive landscape scene with hay-cart*, oil on board, signed lower right, 60 x 73cm
£200-300

2432

John Crealock (1871-1959) - *Three-quarter length portrait of George Humphrey Esq*, oil on canvas, signed and dated 1930 lower right, 129 x 96cm
£200-300



Lot 2432

All lots plus buyers premium of 24% including VAT



2433

**Henry Garland (1834-1913) -
Ninepence an hour, oil on canvas,
signed and dated 1898 lower left, 35
x 52cm
£1,500-2,500**

2434

**Charles Edward Wilson (1854-
1941) - Woman and children on a
country lane, watercolour, signed
lower left, 29 x 23cm
£500-800**

2435

**George Morland (1763-1804) -
Coastal scene with figures and dog,
watercolour, signed with GM
monogram lower right and dated
1792, 30 x 45cm
£150-250**

Lot 2433



Lot 2434



Lot 2435

2436

**George Armfield (1808-1893) -
Shooting pony with dogs and
game, oil on canvas, signed and
dated 1872 lower right, 30 x 40cm
Provenance: ex-St
Peter's Gallery,
Clare, Suffolk
£200-300**



Lot 2436

All lots plus buyers premium of 24% including VAT



Lot 2437



Lot 2438



Lot 2439

2437
 Attributed to John Moore of Ipswich (1820-1902) - Coastal scene with sailing vessels in choppy waters, oil on canvas, signed lower right
 £250-400

2438
 Ernest Charles Walbourn (1872-1927) - Pair; North Country mountain river landscapes, oil on canvas, each signed lower right, 30 x 50cm
 £250-400

2439
 Adelaide Paget - St James Palace, 10th February 1840, depicting the marriage of Queen Victoria & Prince Albert, watercolour heightened in white, titled and signed to the slip, 43 x 60.5cm
 £150-250



Lot 2441

2440
 Richard L Aldridge (circa 1840-1900) - The Card School, interior scene, oil on canvas, signed lower right, 64 x 51cm
 £300-500

2441
 Follower of James Stark - Travellers with a white donkey at rest in a river landscape, oil on canvas, 54 x 80cm
 £80-120



Lot 2440



Lot 2442

2442
 J Peretti (!) - Catch that mouse, interior scene, oil on canvas, signed lower right (re-lined), 39 x 50cm
 £150-250

All lots plus buyers premium of 24% including VAT



Lot 2443

2443
Michael Pettersson (b.1939) -
Towards Blythburgh Church,
 watercolour heightened with white,
 signed and dated 4-'84 lower right, 36
 x 54cm
£60-80

2444
Wycliffe Eggington (1875-1951) - A
Worcestershire cottage, watercolour,
 signed lower left, further inscribed
 verso, 43 x 56cm
£150-250



Lot 2444

2445

The Hat - Anxiety, oil on panel
 triptych, the centre panel 82 x 58cm,
 outer panels each 82 x 33.5cm.

*Note: 100% of the hammer price will
 be donated to the charity below.*

**'Suffolk Banksy' painting donated
 to the Zoological Society of East
 Anglia goes up for auction**

The Zoological Society of East
 Anglia, the charity which runs
 Banham Zoo in Norfolk and Africa
 Alive! in Suffolk, is putting up for
 auction the artwork donated to
 them by the elusive Suffolk artist,
 'The Hat'.

'Anxiety', an exclusive and
 stunning triptych painting by the
 artist, otherwise known as the
 'Suffolk Banksy' was left at the gates
 of Banham Zoo under the cover of
 darkness while the zoo was closed
 to the public during lockdown one.
 It is widely speculated that the
 artist behind the anonymous
 moniker is global superstar, Ed
 Sheeran, although this claim is
 refuted by his team.

Claudia Roberts, Managing
 Director, said: "Thank you to 'The
 Hat' for such a kind and generous
 gesture during our time of need.
 'Anxiety' is a magnificent painting that
 would make a beautiful addition to
 any home or private collection – its
 name is also quite apt given our
 charity's circumstances over the last
 eight months. Part of the charity's
 ethos is to provide opportunities to
 increase social wellbeing through the
 proven connection between wellbeing,
 animals and nature".

The Zoological Society of East
 Anglia (ZSEA) set up a new
 fundraising campaign when the
 pandemic first struck, 'Wild About



Lot 2445

Survival', to help Banham Zoo and Africa Alive! survive
 the difficult time ahead. The charity is now putting this
 painting up for auction with all proceeds from the sale of
 the painting going into this campaign.

Claudia Roberts commented: "Paintings by 'The Hat' are
 currently selling well and some are even being sold for up to
 £4,000. We have been undecided whether to auction off the
 painting or keep it for our guests at the zoo to enjoy. By
 putting it up for auction it means that a lucky member of the
 public can enjoy it from the comfort of their own home and
 we also get to raise vital funds".

The Zoological Society of East Anglia (ZSEA) were
 forced to close both of their zoos in March due to the
 coronavirus pandemic. During this time, they lost almost
 £2 million in visitor income. Although the zoos reopened,
 the implementation of social distancing measures and
 limited visitor numbers, in addition to the most recent
 closure due to lockdown two, the charity is still
 forecasting a drop in revenue.

See www.banhamzoo.co.uk or
www.africa-alive.co.uk or to donate to the
 'Wild About Survival' fundraising appeal on
 JustGiving.

All lots plus buyers premium of 24% including VAT

CLOCKS & BAROMETERS



Lot 2449

2449
George Priest of Norwich - an early 19th century mahogany droptrunk wall clock, having a signed white enamel 15" dial with Arabic numerals, single winding hole for an eight weight driven movement striking on a bell, the case with panelled door; h.120cm
£500-700



Lot 2453

2450
Attributed to Francis Bullock of Thame - a late 17th century walnut cased longcase clock, having re-gilded 9" square brass dial, with silvered chapter ring, subsidiary seconds dial, date aperture, twin winding holes for a brass eight day five-pillar movement, having pull/repeat(?) and striking on a bell, the narrow case with fruitwood inlays and boxbase, h.207cm
£1,200-1,800

2451
A late Victorian oak cased four-glass bracket clock, having unsigned silvered dial, twin winding holes for a Winterhalder & Hoffmeier brass eight-day movement striking on a gong, stamped W&H Sch to the backplate, the case having four bevelled glass panels, over an ogee moulded plinth, h.30cm
£200-300

2452
A late 19th century Bulle patent electric mantel clock, having signed silvered dial with Arabic numerals and 24-hour scale, lacquered brass frame and movement, the whole under heavy engraved glass dome and raised on a turned oval ebonised plinth, gross h.38cm
£250-350



Lots 2451, 2452



Lot 2450

2453
A late 19th century French alabaster, bronze and gilt bronze mantel clock, having a convex white enamel dial signed by the retailer Maple & Co and further signed Paris, with Arabic numerals, polychrome decorated with swags of flowers, twin winding holes for a French brass eight day cylinder movement striking on a bell, the case well cast and surmounted with a basket issuing fruit, flowers and foliage, flanked to either side by billy-goats, all supported on two bronze winged cherubs, the whole further adorned with gilt bronze ribbons and swags, h.39cm
£500-800

All lots plus buyers premium of 24% including VAT



Lot 2454

2454

A mid-19th century French white marble and gilt brass portico clock garniture, having unsigned convex white enamel dial, twin winding holes for an eight day brass cylinder movement, having outside countwheel and striking on a bell, the case surmounted with pedestal urns in gilt brass, and having further floral swags to a shaped beaded base, h.40cm, the garniture as a pair of urns on beaded circular bases, h.26cm

£500-700

2455

John Cure(?) of Bowling-Lane - an early 19th century oak longcase clock, the hood having broken swan-neck pediment with brass finials, fluted pilasters flanking 13" signed square brass dial, the brass chapter ring with Roman and Arabic numerals, subsidiary seconds dial, rolling moon dial, further engraved with urns and swags, twin winding holes for a brass eight day four pillar weight driven movement striking on a bell, the case having panelled door flanked by quarter turned fluted pilasters to a boxbase on bracket feet, h.220cm

£400-500



Lots 2455, 2456

2456

A George III mahogany longcase clock, the London case having a domed hood, stop-fluted pilasters flanking 12" unsigned arched brass dial, the arch with engraved silvered disc depicting Cupid, brass cast mask corner spandrels, silvered chapter with Roman and Arabic numerals, rolling date dial and subsidiary seconds dial, matted centre, twin winding holes for a brass eight day five pillar weight driven movement striking on a bell, the case having arched panelled door with ogee mouldings to a boxbase, h.206cm

£400-600

All lots plus buyers premium of 24% including VAT



Lot 2457

2457

Edward Norris at The Crossed Keys in Cateaton Street - a late 17th century brass lantern clock, surmounted by a strapped bell and five urn finials between four engraved arched frets, over four turned columns, with side doors, on ball feet, the 6¼" silvered Roman chapter ring with wheat-ear half hour markers and inner quarter hour track, the centre signed with a cross keys pictogram over a run of flowers and foliage, centred by an alarm setting disc with engraved flower head, single steel hand and alarm, the weight driven movement with reconverted balance control, h.37cm, circa 1680, the whole sold with modern oak wall bracket and two weights

Note: Edward Norris at Ye Cross Keys in Cateaton Street was apprenticed in 1650 to William Selwood, but completed his training under Thomas Loomes as part of the Fromanteel Concern, working independently from about 1660. He married the daughter of much older Selwood apprentice, Thomas Knifton, whose trading symbol he took as his own. Knifton premises were destroyed in the Great Fire of 1666, and he died soon after at Norris's home. Norris became master of the Clockmakers Company in 1687, and died in 1707. He almost exclusively made lantern clocks with traditional balance escapements, of which only half a dozen are known today, and only two from his Cateaton Street premises. This clock is featured extensively in an article by Brian Loomes published on clocksmagazine.com, January 2018 - a copy of which is reproduced on our website.

£4,000-6,000

458

A circa 1900 gilt brass four glass clock by Guichard of Chalon-Sur-Saône, the case with applied foliate pierced border; the 4" gilt dial with further foliate decorated centre, with twin train movement striking on a gong and with double mercury pendulum, h.31cm
£300-500

2459

A mahogany and gilt metal mounted bracket clock, 18th century and later; the ogee moulded caddy top with brass swing carry handle, the 7" silvered dial with engraved brass floral centre, signed Jonathan Walker, 230 Regent Street, London, on scroll bracket feet, with single fusee movement and anchor escapement, with pendulum and case key, h.48.5cm (handle up)
£200-300



Lot 2460

2460

A mid-19th century French Baccarat type cut glass and gilt bronze mantel clock, of unusual outline, having white enamel chapter ring with Roman numerals, within engine turned surround and centre, with single winding hole for a French brass eight-day cylinder movement, with long pendulum arm, the whole in hobnail cut glass case supported on recumbent griffins, to further hobnail cut oval base, h.30cm
£300-500



Lots 2458, 2459

All lots plus buyers premium of 24% including VAT



Lots 2461, 2462, 2463



Lots 2465, 2466

22461

A circa 1900 French lacquered brass carriage clock, the white enamel dial within an applied leaf and flower scrollwork surround, visible platform lever escapement, eight-day going single barrel movement, h.12cm (handle down) £80-120

2462

A late 19th century French gilt brass mantel clock, having porcelain inset dial and side panels, each polychrome decorated with winged cherubs on a pink ground, twin winding holes for a brass eight-day cylinder movement striking on a bell, the case surmounted with a reclining maiden, all raised on scroll capped paw feet, h.26cm £200-300

2463

A Victorian rosewood and marquetry inlaid carriage clock, having an unsigned engraved brass dial with Roman numerals, twin winding holes for a Rollin of Paris eight-day brass cylinder movement, having outside countwheel and striking on a bell, h.22.5cm £150-200

2464

A George V tortoiseshell cased travelling clock barometer by Finnigans, the easel case opening to reveal twin white enamel dials, the clock with keyless movement, the case with silver hinges assayed London 1914, case w.16cm £120-180



Lot 2464

2465

Mrs Janet Taylor, 104 The Minories, London - a Victorian rosewood stick barometer, having signed ivory scale and neighbouring ivory thermometer dial to a plain case, 97cm.

Note: Janet Taylor (1804-1870) was one of only a handful of women working as scientific instrument makers in 19th century London and established her own Nautical Academy at 104 Minories in the 1830s. She invented and patented a 'Mariner's Calculator' in 1834 to establish the true time and altitude while at sea, which unfortunately was turned down by the Admiralty for being too delicate for the 'clumsy fingers of seamen'. Nevertheless her many publications and inventions garnered her awards from the kings of Prussia and Holland, as well as the Pope for her contribution to the maritime community, and the Admiralty awarded her a Civil List pension towards the end of her life. A night telescope made by Taylor is in the Greenwich National Maritime Museum, and other works are held in science museums and library collections around the world. £200-400

2466

L Dixey of Brighton - a Victorian figured walnut cased stick barometer, having signed ivory scale and further thermometer dial, the polished case with applied scroll mouldings, h.101cm £200-300

All lots plus buyers premium of 24% including VAT

FURNITURE & FURNISHINGS



Lot 2470



Lot 2471



Lot 2472



Lot 2474

2472

A George III fruitwood elbow chair, having pierced vase splatback, drop-in seat, and on ogee square supports; together with a circa 1800 elm barback elbow chair with drop-in seat (2)
£120-180

2473

An antique joined oak side table, having a two-plank top over rosette blind carved frieze drawer, all raised on bobbin turned square cut supports, w.87cm, d.54cm, h.68.5cm
£200-300



Lot 2473

2470

A pair of oak and burr walnut veneered freestanding open bookshelves, in the late 18th century style, each having twin fixed shelves and raised on blind bases, w.65cm, d.28cm, h.125cm
£300-500

2471

A Sheraton Revival mahogany and satinwood banded nine-piece parlour suite, comprising settee, pair of armchairs, pair of nursing chairs, and four salon chairs, each upholstered in a striped silk damask, all raised on square tapering supports with brass castors, settee w.140cm
£500-600

2474

A George III mahogany games table, having a gilt tooled leather inset top above an arrangement of six drawers, the centre top drawer having inset chess board in bone and ebony, the whole with brass banding and raised on ring turned tapering supports, w.82cm, d.46cm, h.77cm
£200-300

All lots plus buyers premium of 24% including VAT



Lot 2475



Lot 2477



Lot 2478

2475

A George III mahogany card table, the fold-over top with proud corners, on single gateleg rear action and opening to reveal baize lined playing surface, the whole raised on hipped cabriole supports with padfeet, w.86cm, d.42cm, h.72.5cm
£200-300

2476

A late Victorian lacquered brass and stoneware telescopic lamp standard, probably Doulton Lambeth, having fluted and knopped column to a stoneware base with incised leaf decoration, the whole raised upon paw feet, fitted for electricity
£150-250

2477

An 18th century oak dresser base, the two-plank top having a moulded edge over three frieze drawers, each with boxwood and ebony stringing, w.183cm, d.49cm, h.73cm
£400-600

2478

A teak campaign chest, in two sections, each with two drawers and having flush brass handles, all raised on turned feet, w.68cm, d.48cm, h.109cm
£250-400

2479

A late Regency mahogany bowfront chest, having two short and three long graduated drawers within spiral reeded quarter turned pilasters, w.105cm, d.52cm, h.109cm
£200-300

2480

An antique oak and elm chest, in the Jacobean style, having four long geometric moulded drawers, w.90cm, d.53cm, h.80cm
£300-500



Lot 2476



Lot 2479



Lot 2480

All lots plus buyers premium of 24% including VAT



Lot 2482



Lot 2484

2481

A George III mahogany squarefront chest, having a crossbanded top over two short and three long graduated drawers, within fluted canted corners, w.108cm, d.52cm, h.99cm
£250-350

2482

A mid-Victorian rosewood pedestal breakfast table, the circular tilt-top having a moulded edge to an octagonal baluster column on hipped cabriole supports, dia.132cm, h.75cm
£200-300

2483

A Victorian mahogany extending dining table, of good size, the top having four extra leaves (one appears later and table appears to only be able to accommodate three), over a plain frieze and raised on ring turned and tapering knopped supports with heavy brass cup casters, depth 142cm, w.304cm (accommodating three leaves), h.73cm
£1,000-1,500

2484

A set of twelve mahogany dining chairs in the Chippendale style, each having swept top rails and pierced vase splats, with silk damask drop-in seats, circa 2000 (10+2)
£300-500



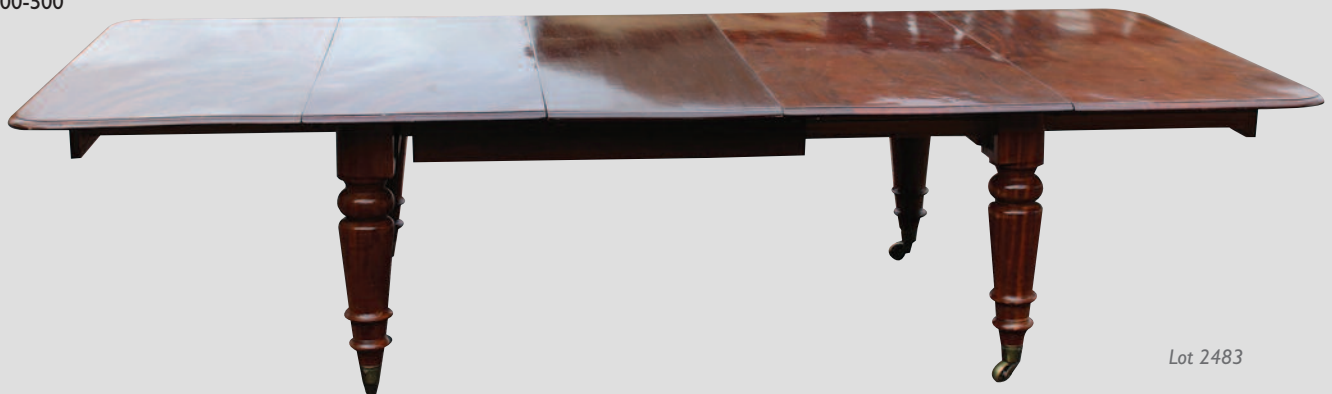
Lot 2481



Lot 2485

2485

A Rococo Revival carved giltwood pier glass, the rectangular plate surmounted with a bird of prey within a surround of C-scrolls and trailing acanthus leaves (some losses), h.124cm, w.63cm
£300-500



Lot 2483

All lots plus buyers premium of 24% including VAT



Lot 2486



Lots 2487, 2488



Lot 2490



Lot 2491

2486

A pair of Victorian style oak, burr oak and crossbanded dwarf open bookcases, having adjustable shelves, each on plinth base, w.63cm, d.30cm, h.99cm
£400-600

2487

A pair of oak, burr oak and crossbanded bedside chests, each having a brushing slide above three long graduated drawers, raised on plinths, w.42cm, d.41cm, h.66cm
£400-600

2488

A George I style walnut bachelors chest, the oak crossbanded and feather strung fold-over top above four long graduated drawers, raised on bracket feet, w.63cm, d.33cm, h.76cm
£300-500



Lot 2489

2489

A Victorian style mahogany apothecary's dispensary chest, fitted with four rows of four short drawers, each with painted annotation, the whole raised on plinth base, w.68cm, d.26cm, h.75cm
£400-600

2490

A pair of walnut and satinwood crossbanded lamp tables, each having a rectangular top above a single drawer, raised on slender turned supports, w.54cm, d.46cm, h.77cm
£300-500

2491

A Victorian mahogany extending dining table, the wind-out top having three extra leaves, each with a moulded edge, the whole raised on turned and tapering reeded supports with brass cup and pot casters, d.136cm, h.73cm, max w.244cm
£300-400

All lots plus buyers premium of 24% including VAT



Lot 2492



Lot 2493



Lot 2494



Lot 2496

2492

In the manner of Jupon - a Regency style mahogany radial extending dining table, all raised on four ring turned columns to square cut outswept supports with brass caps and casters, dia.185cm, h.72cm; together with the original five section leaf cabinet with panelled door and brass carry handles, w.48cm
£400-600

2493

A circa 1900 faded walnut twin pedestal partners desk, having a gilt tooled leather inset writing surface above three frieze drawers to either side, the bases each having a flight of three drawers, w.152cm, d.106cm, h.76cm
£400-600

2494

A Victorian carved alabaster torchère, the column with flutings and leaf carving, to an octagonal base, h.110cm
£150-250

2495

A circa 1700 joined oak six-plank coffer, the rectangular hinge top above a rosette carved frieze, on plain end supports, w.118cm, d.39cm, h.60cm
£200-300

2496

An antique oak Wainscot style chair, having a shaped panelled back with flower head carvings, above a panel seat with embroidered cushion, on square cut supports united by H stretchers, 18th century and later; w.57cm, d.53cm, h.124cm, seat h.52cm
£120-180

2497

A Victorian rosewood pedestal games table, having a circular fixed top with satinwood and rosewood inset chess board, the whole raised on triform base, h.72cm, dia.52cm
£150-200

2498

A George III mahogany lowboy, the top having a moulded edge over three frieze drawers with fret carved apron, raised on chamfered square supports, w.81cm, d.45cm, h.71cm
£200-300

2499

A Sheraton Revival painted satinwood occasional table, having a shaped and crossbanded top, polychrome decorated with a central floral bouquet with birds, quiver of arrows, and ribbons, the corners with floral sprays, the whole raised on slender ring turned supports united by platform undertier; w.51cm, d.35cm, h.75cm
£200-300



Lot 2495



Lots 2497, 2498, 2499

All lots plus buyers premium of 24% including VAT



2500

A mahogany triple pillar pedestal dining table, in the Regency style, the top having a reeded edge and two extra leaves, the pillars raised on outswept reeded supports with brass caps and casters, mid-20th century, max. dimensions w.114cm, full length 386cm, h.73cm
£1,000-1,500

Lot 2500

2503

A set of six early 19th century elm and rush seat ladderback dining chairs and a matching elbow chair, each with reeded uprights and splats (6+1)
£400-600



2504

A Victorian mahogany spoonback nursing chair, the swept arms having leaf carving, the whole re-upholstered in a buttonback draylon, on French cabriole forelegs with brass casters
£150-250

Lot 2504

2501

A set of six George III mahogany dining chairs, having pierced vase splat backs, leather upholstered drop-in seats, and raised on ogee moulded chamfered square supports (5+1)
£400-600



2502

An 18th century French joined cherry wood refectory table, the three plank top having cleated ends over a plain frieze with three frieze drawers, the whole raised on square tapering supports, w.219cm, d.99cm, h.77cm
£600-800

Lot 2502



Lot 2501



Lot 2503

All lots plus buyers premium of 24% including VAT



Lot 2505



Lot 2508



Lot 2509



Lot 2510



Lots 2506, 2507

2505

A Sheraton period mahogany and inlaid inverted breakfront sideboard, the top with satinwood crossbanding and ebony and boxwood chequer stringing, the sides with twin cupboard doors with oval crossbanded fielded panels, the central bowfront frieze drawer over fan marquetry inlays, the whole raised on moulded and square tapering supports, w.168cm, d.66cm, h.90.5cm
£300-500

2506

A Victorian later-veneered oak, burr oak, and satinwood crossbanded Wellington chest, fitted with seven graduated doors enclosed by a locking stile, raised on plinth base, w.57cm, d.40cm, h.122cm
£600-800

2507

An Edwardian rosewood and bone strung music cabinet, the upper section enclosed by a pair of bevelled glazed doors, the right door stamped '826C' to the top, having a partitioned lower open section, raised on square cut supports, w.67cm, d.43cm, h.120cm
£100-150

2508

A contemporary walnut, oak crossbanded and feather strung hall table, of narrow proportions, fitted with four short drawers, raised on turned supports, w.130cm, d.30cm, h.77cm
£300-500

2509

A Victorian style satinwood bowfront hall table, of narrow proportions, fitted with two frieze drawers, raised on turned supports, w.120cm, d.33cm, h.77cm
£200-300

2510

A Victorian style mahogany window seat, the rectangular top having rolled ends, raised on turned supports, w.104cm, d.32cm, h.52cm
£150-250

All lots plus buyers premium of 24% including VAT



Lot 2511



Lot 2512



Lot 2513

2511
A carved walnut kidney shaped kneehole writing desk, early 20th century, having a tooled leather inset top over an arrangement of five drawers, raised on French cabriole supports with scroll terminals, the whole carved with scroll leaves, flowers and foliage, w.121cm, d.55cm, h.75cm
£500-800

2515
A Vernis Martin style walnut and kingwood vitrine, of serpentine outline, having gilt brass mounts and velvet lined shelved interior; the door with floral marquetry basket inlay, h.165cm, w.78cm, d.41cm
£400-600



Lot 2514

2512
A late Victorian rosewood three-division music canterbury, having base drawer and on ring turned tapering supports with brass and pot casters, w.53cm
£150-200

2513
A Regency mahogany card table, the rectangular fold-over top with canted corners opening to reveal a baize lined playing surface, on fluted columns and splayed supports terminating in brass caps and casters, w.91cm, d.45cm, h.74cm (closed)
£150-250

2514
A Victorian walnut centre table, the rectangular serpentine top above a single drawer; raised on cabriole supports, the whole with gilt metal mounts, w.101cm, d.57cm, h.78cm
£300-500



Lot 2515

All lots plus buyers premium of 24% including VAT



Lot 2516

2517

A late Regency rosewood breakfront side cabinet, having an associated ledgeback over a plain frieze, four later mirrored doors enclosing adjustable shelves, the whole with gilt metal mounts, w.183cm, d.41cm, h.94cm (excluding ledgeback)
£200-300

2518

A William IV rosewood pole screen, the adjustable shield shaped screen embroidered with shells within C-scroll border; the whole raised on a tulip carved column and platform base with scroll feet, h.140cm, w.54cm
£150-250

2519

A Victorian papier-mâché and mother of pearl inlaid work table, the domed dual-hinged lid painted with a castle and church scene, raised on pierced end supports united by a central stretcher; w.35cm, d.31cm, h.76cm
£120-180



Lot 2517

2516

A Victorian burr walnut and marquetry inlaid credenza, having gilt metal mounts, the serpentine glazed doors enclosing velvet lined shelved interior and flanking centre four-quarter veneered door; marquetry inlaid with a vase issuing flowers and foliage, the whole on shaped plinth with further gilt metal mounts, w.154cm, d.43cm, h.104cm
£700-1,000

2520

A pair of mahogany bedside chests, each having rectangular top above four long graduated drawers with pressed brass handles, the whole raised on plinths, w.52cm, d.54cm, h.80cm
£400-600



Lots 2518, 2519



Lot 2520

All lots plus buyers premium of 24% including VAT



Lot 2521

2521

A George II style walnut chest, the rectangular quarter veneered top with crossbanding and feather-stringing, above a brushing slide and two short over three long drawers, raised on swept bracket supports, 78cm, d.44cm, h.102cm
£300-500



Lot 2522

2522

A Regency mahogany twin pedestal dining table, the top having a reeded edge and two extra leaves (probably formally with centre pedestal), the gun barrel ring turned columns on outswept and tapering reeded supports with brass caps and casters, max dimensions d.117cm, w.230cm, h.72cm (note that mahogany top is of exceptional colour and quality)
£600-800

2524

A George III mahogany writing bureau, the hinged fall opening to reveal fitted interior; above four long graduated drawers, each with pierced brass batwing escutcheons, raised on bracket supports, w.91cm, d.53cm, h.107cm
£150-250

2525

A George III style mahogany framed wingback open armchair, upholstered in tan buttonback studded leather; raised on square ogee moulded supports
£400-600



2523

A French mahogany reclining armchair by Jeanselme, circa 1830-40, with adjustable back and slide-out ratcheted footrest, upholstered in buttonback red leather, stamped Jeanselme, h.110cm
£1,000-1,500



Lot 2523

Lots 2524, 2525

All lots plus buyers premium of 24% including VAT



Lot 2526

2526
 A set of six William IV rosewood dining chairs, each having a barback above a drop-in seat, on tulip carved front supports
 £400-600

2527
 A George III style walnut and crossbanded chest, of serpentine outline, having a brushing slide above four long graduated drawers, raised on bracket feet, w.77cm, d.48cm, h.86cm
 £200-300



Lot 2527



Lot 2527



Lot 2529

2528
 A Victorian rosewood and fret carved settee, the whole reupholstered in a floral silk damask, with three panel fret carved frieze, the downswept arms with raised scroll carving and pierced sections, further fret carved apron, all raised on square tapering supports with brass and pot cup casters, w.197cm, full depth 72cm, h.87cm, seat h.41cm
 £700-1,000

2529
 A Victorian walnut and burr walnut tambour fronted dentist's cabinet, the tambour opening to reveal concealed bevelled mirror and single fixed shelf, the panelled fallfront opening to reveal two flights of size drawers, formally with gallery or upper section, w.59cm, h.76cm, d.28cm; together with sundry dentistry tools
 £300-500



Lot 2528

2530
 Robert Mullis - a contemporary dapple-grey rocking horse on oak stand, with mane and tail, leather saddle and tack, w.127cm (hoof to hoof), h.143cm (floor to tips of ears)
 £400-600

END OF SALE

All lots plus buyers premium of 24% including VAT

LSKlive

Can't make it on the day, but don't want to miss out on the action?

Want to have complete control over your bids, but don't want to pay too much for the privilege?

In that case, look no further. We are pleased to announce the launch of LSKlive; hassle-free and secure live bidding through our website.

You can register and bid in real time while the auction is taking place through our LSKlive portal (3% plus VAT surcharge applies), which becomes live half an hour before the auction is due to start. This platform uses thesaleroom.com technology and is completely secure. Once you have registered your card details through our website, you won't need to re-register for future sales - just sign in and start bidding!

Vendors who can't wait to see how their lots got on, or the purely curious, can also follow the auction in real time without registering card details.

Please note that if you register for our auction on thesaleroom.com first, then you will be liable for their 4.95% (plus VAT) fee instead of our 3% (plus VAT) fee.

Of course, you can still leave commission bids through our website before the auction or by email and over the telephone. We can also arrange telephone bids on higher value lots. You are also very welcome to come along on the day! We are located in the heart of beautiful Bury St Edmunds 'a historic jewel in Suffolk's crown' and have our own car park.



**BID
LIVE!**